

南阳市房产面积（实测）测绘报告书

测绘单位自编号： NY(2025)0036 号
测绘类型： 房产面积实测绘
房产坐落： 宛城区张衡大道中段 551 号
测绘单位： 邓州市邓房测绘有限公司
建设单位： 南阳市锦寓置业有限公司
测绘幢号： 宛城区汉冶街道净土庵社区闫庄城中
村改造项目 26#B 楼



(测绘单位盖章)

2025 年 12 月 25 日



营业执照

(副本)(1-1)

统一社会信用代码
91411381571011336U



扫描二维码
“国家企业信用
信息公示系统”
了解详细登记、
备案、许可、监
管信息。

名称 邓州市邓房测绘有限公司 注册资本 壹佰万圆整

类型 有限责任公司(自然人投资或控股) 成立日期 2011年03月15日

法定代表人 赵永红 住所 邓州市张楼乡星河湾小区13-1-5

经营范围 许可项目:测绘服务;检验检测服务(依法须经批准的项目,经相关部门批准后方可开展经营活动,具体经营项目以相关部门批准文件或许可证件为准)
一般项目:卫星遥感数据处理;地理遥感信息服务;承接档案服务外包;环境保护监测;土壤污染治理与修复服务;水土流失防治服务;土地调查评估服务;社会稳定风险评估;房地产经纪;房地产咨询(除依法须经批准的项目外,凭营业执照依法自主开展经营活动)

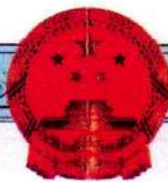
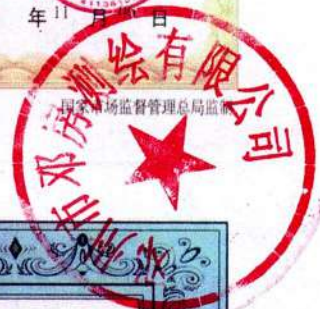
登记机关



2024 年 11 月 11 日

国家企业信用信息公示系统网址: <http://www.gsxt.gov.cn>

市场主体应当于每年1月1日至6月30日通过
国家企业信用信息公示系统报送公示年度报告



甲级测绘资质证书

专业类别: 甲级:工程测量、界线与不动产测绘。***

单位名称: 邓州市邓房测绘有限公司

注册地址: 邓州市张楼乡星河湾13-1-5号

法定代表人: 赵永红

证书编号: 甲测资字41101590

有效期至: 2029年9月8日

发证机关(印章)

2024年9月9日



No. 007304

中华人民共和国自然资源部监制

咨询电话:17527775306

建设单位验收结论

我方本项目负责人 梁雪霞 对本房产测绘成果进行验收：
对本房产测绘成果进行验收：

- 1、测绘单位采用的资料真实、合法；
- 2、该测绘成果完整、真实；
- 3、该测绘成果与委托内容一致；
- 4、该测绘成果对专有部位、共有部位的认定与事实相符；
- 5、对该测绘成果各部分面积无异议，并同意在南阳市不动产登记服务中心官网予以明示。

验收结论：合格
验收人：梁雪霞
验收日期：2025年12月23日

建设单位：南阳市锦寓置业有限公司



房屋状况表

房屋坐落	宛城区张衡大道中段551号			测绘幢号	26#B楼			建成年份	2025
建设单位 (产权人)	南阳市锦寓置业有限公司	总层数	33	地上层数	31	总建筑面积	36712.54	套内面积	28943.56
				地下层数	2			分摊面积	7768.98

房屋状况	房屋规划用途及面积						墙体归属				
	规划用途	建筑结构	房屋所在层	面积	套数	间数	墙体所在层	东	南	西	北
	安置商业	剪力墙	1-4	8654.75	/	4	1-4	共	共	共	共
	公厕	剪力墙	1	66.40	/	1	1	共	共	共	共
	社区服务设施	剪力墙	5	322.97	/	1	5	共	共	共	共
	物业用房	剪力墙	5	507.97	/	1	5	共	共	共	共
	社区文体活动中心	剪力墙	5	664.52	/	1	5	共	共	共	共
	党建用房	剪力墙	5	741.77	/	1	5	共	共	共	共
	住宅	剪力墙	6-31	25617.58	208	/	6-31	共	共	共	共
	地下室风井	剪力墙	1	20.27	/	4	1	共	共	共	共
屋面梯间	剪力墙	出屋面层	116.31	/	4	出屋面层	共	共	共	共	

备注

需要说明的其他问题：其中为整幢服务的屋面梯间面积 116.31 m²；位于 1 层为地下部分服务的地下室风井面积 120.27 m²；为整个小区服务的公厕面积 66.40 m²，位于 5 层为整个小区服务的社区服务设施、物业用房、社区文体活动中心、党建用房面积 2237.23 m²，以上面积均计入总建筑面积。

幢分摊说明书

幢名称	26#B楼	房屋座落	宛城区张衡大道中段551号	
幢套内面积	幢共有面积	幢建筑面积		备 注
28943.560	7768.980	36712.54		
功能区划分				
功能区名称	功能区户室			功能区面积(m ²)
1层安置商业	安置商业101			1611.280
地下室风井	地下室风井103、地下室风井104、地下室风井105、地下室风井106			19.600
一单元住宅	1单元住宅			10146.779
二单元住宅	2单元住宅			9462.877
屋面梯间	屋面梯间01、屋面梯间02、屋面梯间03、屋面梯间04			112.397
公厕	公厕102			56.417
社区服务设施(物业用房)	社区服务设施501、物业用房502			706.040
社区文体活动中心	社区文体活动中心503			564.638
党建用房	党建用房504			630.272
3层安置商业	安置商业301			1863.749
2层安置商业	安置商业201			1884.494
4层安置商业	安置商业401			1884.701
共用区划分				
共用区名称	共用区面积部位			共用区面积(m ²)
地上各功能区共用	1-31层及出屋面层外半墙			1230.063
安置商业、配套用房及住宅共用	1-5层电井、水暖井、梯间风井、住宅电梯间、住宅楼梯间、住宅门厅			749.875
安置商业及配套用房共用	1-5层安置商业电井、安置商业风井、安置商业楼梯间、安置商业门廊、安置商业排烟井,6层商业风机房			1055.342
1单元住宅共用	1单元6-31层电井、电梯间、楼梯间、前室、室外连廊、水暖井、梯间风井			2316.053
2单元住宅共用	2单元6-31电井、电梯间、楼梯间、前室、室外连廊、水暖井、梯间风井			2308.176
2层安置商业共用	2层卫生间			36.507
3层安置商业共用	3层卫生间			36.551
4层安置商业共用	4层卫生间			36.551
分摊系数				
K系数	所属功能区	K系数值	K系数计算公式	K系数公式说明



K1(1)	地下室风井、屋面梯间、安置商业、配套用房及住宅共用	0.034667	1230.063/(19.600+112.397+749.875+1055.342+1611.280+56.417+706.040+564.638+630.272+36.507+1884.494+36.551+1863.749+36.551+1884.700+2316.053+10146.779+2308.176+9462.877)	地上各功能区共用/(地下室风井+屋面梯间+安置商业、配套用房及住宅共用+安置商业及配套用房共用+1层安置商业+公厕+社区服务设施(物业用房)+社区文体活动中心+党建用房+2层安置商业共用+2层安置商业+3层安置商业共用+3层安置商业+4层安置商业共用+4层安置商业+1单元住宅共用+一单元住宅+2单元住宅共用+二单元住宅)
K2(1)	安置商业及配套用房共用、1单元住宅共用、2单元住宅共用	0.022424	(749.875+25.996)/(1055.342+1611.280+56.417+706.040+564.638+630.272+36.507+1884.494+36.551+1863.749+36.551+1884.700+2316.053+10146.779+2308.176+9462.877)	(安置商业、配套用房及住宅共用+安置商业、配套用房及住宅共用*K1(1))/(安置商业及配套用房共用+1层安置商业+公厕+社区服务设施(物业用房)+社区文体活动中心+党建用房+2层安置商业共用+2层安置商业+3层安置商业共用+3层安置商业+4层安置商业共用+4层安置商业+1单元住宅共用+一单元住宅+2单元住宅共用+二单元住宅)
K3(1)	1层安置商业、公厕、社区服务设施(物业用房)、社区文体活动中心、党建用房、2层安置商业共用、3层安置商业共用、4层安置商业共用	0.119812	(1055.342+60.250)/(1611.280+56.417+706.040+564.638+630.272+36.507+1884.494+36.551+1863.749+36.551+1884.700)	(安置商业及配套用房共用+安置商业及配套用房共用*K1(1)+安置商业及配套用房共用*K2(1))/(1层安置商业+公厕+社区服务设施(物业用房)+社区文体活动中心+党建用房+2层安置商业共用+2层安置商业+3层安置商业共用+3层安置商业+4层安置商业共用+4层安置商业)
K3(2)	一单元住宅	0.241286	(2316.053+132.225)/10146.779	(1单元住宅共用+1单元住宅共用*K1(1)+1单元住宅共用*K2(1))/一单元住宅
K3(3)	二单元住宅	0.257845	(2308.176+131.775)/9462.877	(2单元住宅共用+2单元住宅共用*K1(1)+2单元住宅共用*K2(1))/二单元住宅
K4(1)	2层安置商业	0.022800	(36.507+6.458)/1884.494	(2层安置商业共用+2层安置商业共用*K1(1)+2层安置商业共用*K2(1)+2层安置商业共用*K3(1))/2层安置商业
K4(2)	3层安置商业	0.023081	(36.551+6.466)/1863.749	(3层安置商业共用+3层安置商业共用*K1(1)+3层安置商业共用*K2(1)+3层安置商业共用*K3(1))/3层安置商业
K4(3)	4层安置商业	0.022824	(36.551+6.466)/1884.700	(4层安置商业共用+4层安置商业共用*K1(1)+4层安置商业共用*K2(1)+4层安置商业共用*K3(1))/4层安置商业



房产建筑面积计算明细表

委托单位:	南阳市锦寓置业有限公司			幢号:	26#B楼	
座落	宛城区张衡大道551号		结构	剪力墙		
功能区	计算式				层 次	33
					建 筑 面 积	
4层安置商业	$3.000001*3.000001*(1.570796-\sin(1.570796))/2+3*3*(1.57084-\sin(1.57084))/2-(2.95*0.05)-(7.95*2.5)-(8*1.075)+7.175*8.7+10.725*1.350001+(78.45+84.45)*3.000005/2+84.45*6.099737+80.45*2.350263+1.75*0.7+16.299737*12.3+15.099757*6.2+16.299767*13.1+15.199789*3.25+11.774794*0.55+15.199795*3.25+16.2998*13.2+15.099822*6.4+16.299832*2.800011+6.249836*14.349988+5.75986*5.050001/2-1*(1.1*0.05+2.75*3)+(-1*(1.05*1.8+1.9*1))*2-1*(-(1.2*0.05)+4.95*2.7+1.95*0.05)+(-1*(1.8*0.85))*2-1*(2.5*0.7+2.45*1.1+2.5*0.65)-1*(2.8*1.1+2.75*1.9)-1*(2.7*3+1.95*0.75+1.9*1.2+1.95*0.8)+(-1*(-(1.1*0.05)+2.5*2.45))*2-1*(2.4*0.95)-1*(-(2.25*0.05)+0.65*0.05+0.95*0.05+4*2.45+3.95*3.7+4*1.8)-1*(2.45*0.55)-1*(0.4*0.05+3.85*0.05+1.85*0.05+7.95*2.75+1.8*0.05+2.45*0.05+8*1.15)-1*(2.55*0.500002+2.5*0.399998)-1*(2.5*0.65+2.45*1.1+2.5*0.7)-1*(-(1.2*0.05)+2.7*3+2.75*2.15)+(-1*(1.6*1.35))*2-1*(1.55*1.9+1.65*1.6)-1*(0.499998*0.05+0.9*2.5)-1*(2.7*3+2.75*2.15-(1.2*0.05))-1*(1.65*0.05+3.55*1.55)+376.425$				1884.70	
2层安置商业	$3.000001*3.000001*(1.570796-\sin(1.570796))/2+3*3*(1.57084-\sin(1.57084))/2-(7.95*2.55)-(8*1.075)+1.75*0.025+7.175*8.7+10.725*1.350001+(78.45+84.45)*3.000005/2+84.45*6.099737+80.45*2.350263+1.75*0.7+16.299737*12.3+15.099757*6.2+16.299767*13.1+15.199789*3.25+11.774794*0.55+15.199795*3.25+16.2998*13.2+15.099822*6.4+16.299832*2.800011+6.249836*14.349988+5.75986*5.050001/2-1*(1.1*0.05+2.75*3)+(-1*(1.05*1.8+1.9*1))*2-1*(-(1.2*0.05)+4.95*2.7+1.95*0.05)+(-1*(1.8*0.85))*2-1*(2.5*0.7+2.45*1.1+2.5*0.65)-1*(2.8*1.1+2.75*1.9)-1*(2.7*3+1.95*0.75+1.9*1.2+1.95*0.8)+(-1*(-(1.1*0.05)+2.5*2.45))*2-1*(2.4*0.95)-1*(2.45*0.55)-1*(0.4*0.05+3.85*0.05+1.85*0.05+7.95*2.75+1.8*0.05+2.45*0.05+8*1.15)-1*(0.95*0.05+2.45*0.05+1.8*0.05+7.95*3.3+1.85*0.05+3.9*0.05+8*0.6)-1*(2.55*0.5+2.5*0.4)-1*(2.5*0.65+2.45*1.1+2.5*0.7)-1*(-(1.2*0.05)+2.7*3+2.75*2.15)+(-1*(1.6*1.35))*2-1*(1.55*1.9+1.65*1.6)-1*(0.5*0.05+0.9*2.5)-1*(2.7*3+2.75*2.15-(1.2*0.05))-1*(1.65*0.05+3.55*1.55)+376.337$				1884.49	
3层安置商业	$3.000001*3.000001*(1.570796-\sin(1.570796))/2+3*3*(1.57084-\sin(1.57084))/2+(78.45+84.45)*3.000005/2+6.099737*4+1.75*0.7+24.749743*12.3+23.549762*6.2+24.749771*6.3-(0.05*2.6)-(0.05*1.8)+14.999781*3.95+2.25*0.05+1.6*0.05+24.749787*2.85+23.549792*3.25+20.224797*0.55+23.549798*3.25+24.749803*2.9-(0.05*4.05)-(0.05*1.85)+14.999807*3.95+3.7*0.05+1.6*0.05+24.749813*6.35+23.549823*6.4+24.749833*2.800011+14.699837*3.624988+14.999843*3.625+6.8*0.05+24.749849*3.55+16.049854*3.55+(14.20986+8.449999)*5.050001/2-1*(2.45*0.55)-1*(2.4*0.95)+(-1*(2.5*0.65+2.45*1.1+2.5*0.7))*2-1*(-(1.2*0.05)+2.7*3+2.75*1.95)+(-1*(1.8*0.85))*2-1*(1.05*1.8+1*1.9)-1*(2.75*1.9+1.1*2.8)-1*(1.65*0.05+3.55*1.55)+(-1*(1.6*1.35))*2-1*(2.7*3+2.75*2.15-(1.2*0.05))-1*(-(1.1*0.05)+2.5*2.45)-1*(0.5*0.05+0.9*2.5)-1*(3*2.75+1.1*0.05)-1*(2.8*1.05+1*0.85)-1*(1.95*0.05+4.95*0.75+4.9*1.2+4.95*0.75)-1*(2.45*2.5-(1.1*0.05))-1*(1.55*1.9+1.65*1.6)-1*(-(1.2*0.05)+2.7*3+2.75*2.15)-3*3*(1.57084-\sin(1.57084))/2-$				1863.75	
党建用房	$(16.9*0.7)+13*1.2+6.3*1.2+25.5*0.4+25.45*2.6+25.5*3.75+25.45*1.65+21.7*4.15+20.1*4.9+24.95*0.25+1.2*0.05+27.7*5.849737+(27.7+24.7)*3.000132/2-1*(2.45*2.5-(1.1*0.05))-1*(1.95*0.05+4.95*0.75+4.9*1.2+4.95*0.75)-1*(2.8*1.05+1*0.85)-1*(1.8*0.85)-$				630.27	
社区文体活动中心	$2.45*0.05-(2.5*0.399998)-(2.550018*1.2)-(2.5*1.1)-(2.55*0.650002)+4.15*2.7+1.05*0.15-(1.85*0.05)-(4.05*0.05)+2.9*1.1+6.15*3.425+2.9*1.1+6.15*0.5+6.1*2.925+12.8*1.125+12.85*2.25+12.8*1.85+21.8*0.3+23.45*3.7+22.85*2.65+22.2*0.05-(0.05*1.199998)-(0.9*0.05)+19.5*2.45+1.2*0.05+2.05*0.25+27.65*8.849868-1*(2.45*0.55)+99.886$				564.64	
社区服务设施(物业用房)	$3.000001*3.000001*(1.570796-\sin(1.570796))/2+4.999999*2.350199+9.099868*9.85+9.049868*0.8+9.099868*1.2+9.049868*3.2+9.099868*11.05+4.242642*4.31321+3.000001*3.000015/2-(6.4*1.2)+2.4*0.05-(3.625*2.95)-(3.575*6.8)+8.1*2.350199-(0.7*0.05)-(5.5*2.45)-(6.15*0.05)-(8.9*0.049801)+7.6*2.350199+3.7*0.05+1.6*0.05+10.05*1.65+13.75*3.7+16.299801*21+7.599849*3.55+5.759857*5.05/2+124.900$				706.04	
公厕	$2.8*1.2-(2.350375*0.02435)+8.850001*6.000957+0.400001*0.024043-(0.400002*0.020225/2)+0.000957*0.400001/2+9.980$				56.42	

屋面梯间	$0.875*1.775+4.925*5.1+5.1*2.425+5.5*1.275+1.425*7.125+2.675*0.4+5.125*5.1+1.425*1.625+4.925*5.1+0.875*1.775+3.896$	112.40
二单元住宅	$+(-)$ $(0.575*0.75)+3*1.55+4.675*1.55+10.075*7.975)*4+(2.5*0.95+4.2*1.725+3.5*0.575+9.4*7.225)$ $*26+(9.375*7.225+3.475*0.575+4.175*1.725+2.5*0.95)*26+(9.725*3.275+8.575*4.975+9.525*1.75)*4+(0.5*(5.4*0.6+6.15*1.12))*26+(0.5*(4.9*0.6+5.65*1.12))*26+(0.5*(4.9*0.6+1.12*5.65))*26+(0.5*(1.15*0.52+1.72*5.3+1.12*0.75))*26+(0.5*(3.37*1.27))*4+(-)$ $(0.575*0.75)+2.975*1.55+4.675*1.55+10.1*7.975)*22+(9.725*3.3+8.575*4.95+1.775*9.525)*2$ $2+(0.5*(3.365*1.27))*22+2980.194$	9462.88
一单元住宅	$+(3.575*1.15+3.025*0.575+2.175*1.8+3.9*1.3+10.775*8.225)*4+(2.7*0.95+4.4*1.3+9.6*8.225)$ $*26+(2.7*0.95+4.375*1.3+9.575*8.225)*26+(3*1.55+4.7*0.975+3.95*0.575+10.1*7.975)*4+(0.5*(5.8*0.6+7.045*1.12))*4+(0.5*(5*0.6+5.75*1.12))*26+(0.5*(5*0.6+1.12*5.75))*26+(0.5*(1.72*5.4+1.12*0.75))*26+(3.6*1.15+3.05*0.575+2.15*1.8+3.9*1.3+10.8*8.225)*22+(2.975*1.55+4.7*0.975+3.95*0.575+10.125*7.975)*22+(0.5*(5.8*0.6+1.12*7.045))*22+3027.565$	10146.78
地下室风井	$5.9*0.8+0.9*6.2+6.2*0.9+0.8*4.649881+(0.8+0.052605)*0.000119/2+0.679$	19.60
1层安置商业	$3.000001*3.000001*(1.570796-\sin(1.570796))/2+3*3*(1.57084-\sin(1.57084))/2-(0.8*4.649881)-$ $((0.8+0.052605)*0.000119/2)+(78.45+84.45)*3.000005/2+84.45*0.199737+83.65*5.9+80.45*2.350263+7.580399*0.039555+1.75*0.7+16.299737*6+14.699747*0.05-(0.05*3.7)-(1.7*2.35)-(1.75*2.55)-(1.8*0.099747)-(2.400253*3.2)-(2.350248*1.2)-(2.400246*0.8)-(2.350245*2.75)+1.05*1.8+1.5*0.1+13.75*1.7+15.65*1+16.29976*0.1+14.49976*6.2+16.29977*2.8-(0.3*4.2)-(1.9*1.35)-(0.3*1.199774)-(2.15*0.05)-(2.600226*0.75)-(2.550225*1.2)-(2.600223*3.2)-$ $(2.550218*0.9)+0.4*0.05+0.55*0.100216+2.35*0.05+1.85*1.75+7.799784*2.25+2.25*0.05+14.499787*6.1+11.774797*0.55+14.499798*6.1+10.649807*0.05-(0.05*0.6)+7.799807*3.95-(1.75*0.95)-(1.7*2.35)-(1.75*2.649814)-(2.4*0.4)-(2.45*0.15)-(2.550186*0.35)-(2.600186*3.2)-(2.550181*1.2)-$ $(2.600179*0.8)+0.05*0.450178+1.199822*1.6+10.05*0.2+13.75*1.6+16.299824*1+15.099826*3.2+1.5*0.2+3.699999*1.6+1.05*1.8+5.599999*1-(0.8*0.05)-(3.2*0.05)-(8.9*2.4)-(7.95*0.05)-(7.9*4.9)-(6.225*1.249999)-$ $(1.35*0.05)+3.6*8.15+10.725*1.900001+21.133163*6.836488/2+22.416121*13.708061/2-(20.358388*8.846797/2)+0.549999*20.350957/2-1*(2.45*0.55)+285.039$	1611.28
合计	---	28943.25
共用部位	计算式	面积

地上各功能区 共用	$3.100001*3.100001*(1.570796-\sin(1.570796))/2+3.1*3.1*(1.570796-\sin(1.570796))/2+6.88*0.03-$ $(2.04*1.77)+15.11*0.03+13.26*0.55+16.53*0.35+10.46*0.9+32.93*0.9+39.1*2.705-$ $(2.705*0.03)+10.56*0.9+16.76*0.3+13.86*0.6+17.46*0.6+40.36*3.305+79.68*6.173109+(78.45$ $+84.65)*3.100001/2+84.65*8.533136+7.538845*59.913136+5.668624*4.97/2-$ $1*(3.000001*3.000001*(1.570796-\sin(1.570796))/2+3*3*(1.57084-\sin(1.57084))/2-$ $(2.3*1.8)-$ $(3.05*0.05)+13*0.6+16.25*0.3+10.2*0.9+32.65*0.9+2.7*38.8/2+38.800008*2.724999/2+38.800$ $008*0.000032+0.9*0.05+10.3*0.9+16.45*0.3+13.575*0.65+17.125*0.55+40*3.325+2.45*0.05+(7$ $8.45+84.45)*3.000005/2+84.45*8.449999+7.580399*0.039555-$ $(79.400004*0.012594/2)+79.633975*6.057151/2+85.218291*4.952991/2+11.799737*84.397395/2$ $)+(-0.25*2.15-1*(0.55*2.45))*4+3.100001*3.100001*(1.570796-$ $\sin(1.570796))/2+3.099997*3.099997*(1.570796-\sin(1.570796))/2+13.36*1.1+16.63*0.1-$ $(0.25*3.305)+13.46*1.1+16.73*0.1+13.86*0.6+17.46*0.6+(78.450003+84.65)*3.100001/2+84.6$ $5*6.229871+84.48*0.69+84.65*1.613264+10.38*0.03+15.796736*3.27+16.346735*13.26+15.1467$ $35*63.15+5.668623*4.97/2-1*(3.000001*3.000001*(1.570796-\sin(1.570796))/2+3*3*(1.57084-$ $\sin(1.57084))/2+13.1*1.1+16.35*0.1-$ $(0.55*3.325)+13.2*1.1+16.45*0.1+13.6*0.65+17.15*0.55+2.45*0.05+(78.45+84.45)*3.000005/$ $2+84.45*6.099737+84.25*0.95+84.45*1.400263+5.499737*0.05+2.8*0.05+15.699737*3.25+16.29$ $9742*13+15.099763*63.1+5.75986*5.05/2)+3.100001*3.100001*(1.570796-$ $\sin(1.570796))/2+3.099997*3.099997*(1.570797-$ $\sin(1.570797))/2+13.86*0.6+17.46*0.6+(78.45+84.65)*3.100001/2+84.65*6.229871+84.48*0.6$ $9+84.65*1.613264+9.92*0.03+15.796736*3.27+16.346735*13.26+15.146735*5.94+16.346735*13.$ $36+15.146734*3.27+11.841734*0.25+15.146734*3.27+16.346734*13.46+15.146733*23.6+5.66862$ $3*4.97/2-1*(3.000001*3.000001*(1.570796-\sin(1.570796))/2+3*3*(1.57084-$ $\sin(1.57084))/2+13.6*0.65+17.15*0.55+2.45*0.05+(78.45+84.45)*3.000005/2+84.45*6.099737$ $+84.25*0.95+84.45*1.400263+5.494737*0.05+2.8*0.047438+6.75*0.002562+15.749737*3.25+16.$ $299742*13+15.099763*6.2+16.299772*13.1+15.099793*3.25+11.774798*0.55+15.099798*3.25+16$ $.299803*13.2+15.099824*23.55+5.75986*5.05/2)+3.100001*3.100001*(1.570796-$ $\sin(1.570796))/2+3.099997*3.099997*(1.570797-\sin(1.570797))/2+13.36*1.1+16.63*0.1-$ $(0.25*3.305)+13.46*1.1+16.73*0.1+13.86*0.6+17.46*0.6+(78.45+84.65)*3.100001/2+84.65*6.$ $229871+84.48*0.69+84.65*1.613264+9.92*0.03+15.796736*3.27+16.346735*13.26+15.146735*63$ $.15+5.668623*4.97/2-1*(3.000001*3.000001*(1.570796-\sin(1.570796))/2+3*3*(1.57084-$ $\sin(1.57084))/2+13.1*1.1+16.35*0.1-$ $(0.55*3.325)+13.2*1.1+16.45*0.1+13.6*0.65+17.15*0.55+2.45*0.05+(78.45+84.45)*3.000005/$	1230.063
安置商业及住 宅共用	$+(0.95*1.75)*2+(1.6*1.35)*10+(0.85*1.8)*2+2.4*2.45+5.1*0.1+5.05*1.4+5.15*0.95+3.45*3.3$ $5+3.5*3.7+3.45*2.65+3.5*1.6+2.75*0.05+5.1*1.7+4.2*0.3+13.75*2.4+16.4*1.05+1.6*0.05+3.7$ $5*0.05+2.45*2.5+(2.5*2.45)*3+1.95*0.05+4.95*0.75+4.9*1.2+4.95*0.75+(-$ $(1.2*0.05)+2.7*3+2.75*2.15)*5+3.7*0.2+2.8*2.65+5.3*0.1+5.25*2.35+3.55*3.35+3.6*3.7+3.5$ $5*2.65+3.6*1.6-(2.65*0.025)-(3.365*0.05)-$ $(9.7*0.025)+4.9*1.6+0.8*2.45+3.5*1.5+3.7*4.249624+3.72435*2.350375+3.7*4.05+3.675*1.60$ $0001+2.7*3+2.75*2.15-(1.2*0.05)+2.7*3+1.95*0.75+1.9*1.2+1.95*0.8+(-$ $(1.2*0.05)+2.7*3+2.75*1.95)*4+(-$ $(1.2*0.05)+5.15*2.7+2.15*0.05)*4+(2.5*0.65+2.45*1.1+2.5*0.7)*8+(2.5*0.7+2.45*1.1+2.5*0$ $.65)*8+(1.65*0.05+1.55*3.55)*4+(1.8*0.85)*8+1.05*1.8+1.9*1+(-$	749.875
安置商业及配 套用房共用	$2.04*1.77+0.95*1.8+2.4*0.95+16.9*0.7+1.5*3.25+3.3*5.05+3.25*3.05+3.3*2.8+3.25*3.9-$ $(2.25*0.05)+4*0.55+3.95*3.75+4*2.4+3.9*1.6+3.95*0.2+2.65*0.05+0.55*0.05+3.95*0.6+3.9*2$ $.25+3.95*3.85+3.9*1.8+1.35*0.05+3.575*0.215+3.525*3.685+3.55*2.65+3.5*1.6+7.5*3.55+2.4$ $5*0.05+2.4*0.4+0.5*2.45+0.5*0.05+0.9*2.4+(0.95*2.4)*4+(0.5*0.05+0.9*2.5)*2+(8.05*3.55+$ $2.45*0.05)*2+7.95*2.55+1.075*2.65+1.025*2.4+1.075*2.95-(2.4*0.05)-$ $(3.7*0.05)+4*1.85+3.95*2.25+4*3.9+(-2.4*0.05)-$ $(2.25*0.05)+4*1.8+3.95*3.75+4*2.45)*2+6.9*0.05+2.8*0.05+17.1*1.75+1.5*1.15+2.2*16.9+(1$ $.6*0.95)*4+0.499999*0.05+0.9*2.5+0.500001*0.05+0.900001*2.5+2.45*0.05+8.05*3.55+(2.95*$ $0.05+9.75*3.575-$ $(2.4*0.05))*2+(2.65*0.05+1.8*0.05+9.75*3.9+1.85*0.05+4.05*0.05)*2+(4.05*0.05+1.85*0.05$ $+1.8*0.05+2.6*0.05+9.75*3.9)*2+7.35*0.05+2.8*0.047438+6.75*0.002562+17.15*1.75+1.5*1.2$ $+2.2*16.9+0.5*0.05+0.899999*2.5+0.499998*0.05+0.9*2.5+2.95*0.05+7.95*2.5+1.075*2.65+1.$ $025*2.4+1.075*2.95+(7.35*0.05+2.8*0.05+17.1*1.75+1.5*1.15+2.2*16.9)*2+0.5*0.049998+0.9$ $00002*2.5+0.5*0.049999+0.9*2.500001+0.65*0.05+2.45*0.05+8.7*3.55+1.85*0.05+3.9*0.05+8*$ $0.6+7.95*2.4+8*0.95-(3.7*0.05)+3.05*3.525+3.05*3.025$	1055.342

1单元住宅共用	$+(4.925*2.725)*4+(2.425*2.45)*7+2.475*0.025+2.425*2.475+5.125*1.5+3.425*0.95+(0.875*1.7655)*4+1.025*1.7655+1.0095*1.925+0.5*(10.14*0.255+11.715*1.19+7.29*0.255)+(5.125*2.725)*4+2.45*2.425+2.8*2.375+2.775*0.3+3.375*0.95+5.475*1.5+1.6*1.375+3.625*1.625+(3.425*0.95+5.15*1.5+2.45*2.475)*3+(2.8*2.375+2.775*0.3+3.375*0.95+5.5*1.5)*3+(1.375*1.6)*3+(0.5*(10.14*0.255+11.69*1.19+8.2745*0.255))*3+(4.925*2.75)*22+(2.45*2.45)*44+(3.45*0.95+5.2*1.5+2.45*2.475)*22+(1.7405*0.875)*22+(1.575*1.375)*22+(0.5*(10.14*0.255+11.64*1.19+8.2745*0.255))*22+(2.8*2.675+3.4*0.95+5.55*1.5)*22+(5.125*2.75)*22$	2316.053		
2单元住宅共用	$+(5.125*2.725)*4+(2.425*2.45)*5+2.275*0.025+2.775*2.675+5.475*1.5+3.375*0.95+1.6*1.375+3.625*1.625+(2.725*4.925)*4+(1.5*1.725+2.45*1+4.925*2.425+2.075*0.025)*4+(0.875*1.8)*4+0.975*0.9+1.025*2.775+0.5*(10.14*0.255+6.89*0.255+11.315*1.19)+(3.375*0.95+5.5*1.5+2.275*0.025+2.775*2.675)*3+(1.375*1.6)*3+(2.45*2.425)*3+(0.5*(10.14*0.255+7.84*0.255+11.29*1.19))*25+(2.45*2.45)*44+(5.125*2.75)*22+(2.8*2.675+5.525*1.5+3.4*0.95)*22+(1.375*1.575)*22+(2.75*4.925)*22+(2.45*2.475+3.45*0.95+5.175*1.5)*22+(0.875*1.775)*22$	2308.176		
2层安置商业共用	2.4*0.05+8.300001*0.025+3.599988*10.050001	36.507		
3层安置商业共用	2.4*0.05+3.624988*10.050001	36.551		
4层安置商业共用	2.4*0.05+3.624988*10.050001	36.551		
合计	---	7769.118		
室号	计算式	套内建筑面积	分摊面积	套建筑面积
安置商业401	$3.000001*3.000001*(1.570796-\sin(1.570796))/2+3*3*(1.57084-\sin(1.57084))/2-(2.95*0.05)-(7.95*2.5)-(8*1.075)+7.175*8.7+10.725*1.350001+(78.45+84.45)*3.000005/2+84.45*6.099737+80.45*2.350263+1.75*0.7+16.299737*12.3+15.099757*6.2+16.299767*13.1+15.199789*3.25+11.774794*0.55+15.199795*3.25+16.2998*13.2+15.099822*6.4+16.299832*2.800011+6.249836*14.349988+5.75986*5.050001/2-1*(1.1*0.05+2.75*3)+(-1*(1.05*1.8+1.9*1))*2-1*(-(1.2*0.05)+4.95*2.7+1.95*0.05)+(-1*(1.8*0.85))*2-1*(2.5*0.7+2.45*1.1+2.5*0.65)-1*(2.8*1.1+2.75*1.9)-1*(2.7*3+1.95*0.75+1.9*1.2+1.95*0.8)+(-1*(-(1.1*0.05)+2.5*2.45))*2-1*(2.4*0.95)-1*(-(2.25*0.05)+0.65*0.05+0.95*0.05+4*2.45+3.95*3.7+4*1.8)-1*(2.45*0.55)-1*(0.4*0.05+3.85*0.05+1.85*0.05+7.95*2.75+1.8*0.05+2.45*0.05+8*1.15)-1*(2.55*0.500002+2.5*0.399998)-1*(2.5*0.65+2.45*1.1+2.5*0.7)-1*(-(1.2*0.05)+2.7*3+2.75*2.15)+(-1*(1.6*1.35))*2-1*(1.55*1.9+1.65*1.6)-1*(0.499998*0.05+0.9*2.5)-1*(2.7*3+2.75*2.15-(1.2*0.05))-1*(1.65*0.05+3.55*1.55)$	1884.70	376.43	2261.13
合计				2261.13
分摊系数	计算式			系数
K12	$(1884.700*0.034667+1884.700*0.022424+1884.700*0.119812+1884.700*0.022824)/1884.700$			0.199726903
室号	计算式	套内建筑面积	分摊面积	套建筑面积

安置商业201	$3.000001*3.000001*(1.570796-\sin(1.570796))/2+3*3*(1.57084-\sin(1.57084))/2-(7.95*2.55)-(8*1.075)+1.75*0.025+7.175*8.7+10.725*1.350001+(78.45+84.45)*3.000005/2+84.45*6.099737+80.45*2.350263+1.75*0.7+16.299737*12.3+15.099757*6.2+16.299767*13.1+15.199789*3.25+11.774794*0.55+15.199795*3.25+16.2998*13.2+15.099822*6.4+16.299832*2.800011+6.249836*14.349988+5.75986*5.050001/2-1*(1.1*0.05+2.75*3)+(-1*(1.05*1.8+1.9*1))*2-1*(-(1.2*0.05)+4.95*2.7+1.95*0.05)+(-1*(1.8*0.85))*2-1*(2.5*0.7+2.45*1.1+2.5*0.65)-1*(2.8*1.1+2.75*1.9)-1*(2.7*3+1.95*0.75+1.9*1.2+1.95*0.8)+(-1*(-(1.1*0.05)+2.5*2.45))*2-1*(2.4*0.95)-1*(2.45*0.55)-1*(0.4*0.05+3.85*0.05+1.85*0.05+7.95*2.75+1.8*0.05+2.45*0.05+8*1.15)-1*(0.95*0.05+2.45*0.05+1.8*0.05+7.95*3.3+1.85*0.05+3.9*0.05+8*0.6)-1*(2.55*0.5+2.5*0.4)-1*(2.5*0.65+2.45*1.1+2.5*0.7)-1*(-(1.2*0.05)+2.7*3+2.75*2.15)+(-1*(1.6*1.35))*2-1*(1.55*1.9+1.65*1.6)-1*(0.5*0.05+0.9*2.5)-1*(2.7*3+2.75*2.15-(1.2*0.05))-1*(1.65*0.05+3.55*1.55)$	1884.49	376.34	2260.83
合计				2260.83
分摊系数	计算式			系数
K11	$(1884.494*0.034667+1884.494*0.022424+1884.494*0.119812+1884.494*0.022800)/1884.494$			0.199702111
室号	计算式	套内建筑面积	分摊面积	套建筑面积
安置商业301	$3.000001*3.000001*(1.570796-\sin(1.570796))/2+3*3*(1.57084-\sin(1.57084))/2+(78.45+84.45)*3.000005/2+6.099737*4+1.75*0.7+24.749743*12.3+23.549762*6.2+24.749771*6.3-(0.05*2.6)-(0.05*1.8)+14.999781*3.95+2.25*0.05+1.6*0.05+24.749787*2.85+23.549792*3.25+20.224797*0.55+23.549798*3.25+24.749803*2.9-(0.05*4.05)-(0.05*1.85)+14.999807*3.95+3.7*0.05+1.6*0.05+24.749813*6.35+23.549823*6.4+24.749833*2.800011+14.699837*3.624988+14.999843*3.625+6.8*0.05+24.749849*3.55+16.049854*3.55+(14.20986+8.449999)*5.050001/2-1*(2.45*0.55)-1*(2.4*0.95)+(-1*(2.5*0.65+2.45*1.1+2.5*0.7))*2-1*(-(1.2*0.05)+2.7*3+2.75*1.95)+(-1*(1.8*0.85))*2-1*(1.05*1.8+1*1.9)-1*(2.75*1.9+1.1*2.8)-1*(1.65*0.05+3.55*1.55)+(-1*(1.6*1.35))*2-1*(2.7*3+2.75*2.15-(1.2*0.05))-1*(-(1.1*0.05)+2.5*2.45)-1*(0.5*0.05+0.9*2.5)-1*(3*2.75+1.1*0.05)-1*(2.8*1.05+1*0.85)-1*(1.95*0.05+4.95*0.75+4.9*1.2+4.95*0.75)-1*(2.45*2.5-(1.1*0.05))-1*(1.55*1.9+1.65*1.6)-1*(-(1.2*0.05)+2.7*3+2.75*2.15)-1*(2.55*0.500001+2.5*0.399999)$	1863.75	372.72	2236.47
合计				2236.47
分摊系数	计算式			系数
K10	$(1863.749*0.034667+1863.749*0.022424+1863.749*0.119812+1863.749*0.023081)/1863.749$			0.199983483
室号	计算式	套内建筑面积	分摊面积	套建筑面积
党建用房504	$3*3*(1.57084-\sin(1.57084))/2-(16.9*0.7)+13*1.2+6.3*1.2+25.5*0.4+25.45*2.6+25.5*3.75+25.45*1.65+21.7*4.15+20.1*4.9+24.95*0.25+1.2*0.05+27.7*5.849737+(27.7+24.7)*3.000132/2-1*(2.45*2.5-(1.1*0.05))-1*(1.95*0.05+4.95*0.75+4.9*1.2+4.95*0.75)-1*(2.8*1.05+1*0.85)-1*(1.8*0.85)-1*(3*2.75+1.1*0.05)$	630.27	111.50	741.77
合计				741.77

分摊系数	计算式			系数
K9	$(630.272 \times 0.034667 + 630.272 \times 0.022424 + 630.272 \times 0.119812) / 630.272$			0.176902544
室号	计算式	套内建筑面积	分摊面积	套建筑面积
社区文体活动中心503	$2.45 \times 0.05 - (2.5 \times 0.399998) - (2.550018 \times 1.2) - (2.5 \times 1.1) - (2.55 \times 0.650002) + 4.15 \times 2.7 + 1.05 \times 0.15 - (1.85 \times 0.05) - (4.05 \times 0.05) + 2.9 \times 1.1 + 6.15 \times 3.425 + 2.9 \times 1.1 + 6.15 \times 0.5 + 6.1 \times 2.925 + 12.8 \times 1.125 + 12.85 \times 2.25 + 12.8 \times 1.85 + 21.8 \times 0.3 + 23.45 \times 3.7 + 22.85 \times 2.65 + 22.2 \times 0.05 - (0.05 \times 1.199998) - (0.9 \times 0.05) + 19.5 \times 2.45 + 1.2 \times 0.05 + 2.05 \times 0.25 + 27.65 \times 8.849868 - 1 \times (2.45 \times 0.55)$	564.64	99.88	664.52
合计				664.52
分摊系数	计算式			系数
K8	$(564.638 \times 0.034667 + 564.638 \times 0.022424 + 564.638 \times 0.119812) / 564.638$			0.176902542
室号	计算式	套内建筑面积	分摊面积	套建筑面积
社区服务设施501	$3.000001 \times 3.000001 \times (1.570796 - \sin(1.570796)) / 2 + 4.999999 \times 2.350199 + 9.099868 \times 9.85 + 9.049868 \times 0.8 + 9.099868 \times 1.2 + 9.049868 \times 3.2 + 9.099868 \times 11.05 + 4.242642 \times 4.31321 + 3.000001 \times 3.000015 / 2$	274.42	48.55	322.97
物业用房502	$-(6.4 \times 1.2) + 2.4 \times 0.05 - (3.625 \times 2.95) - (3.575 \times 6.8) + 8.1 \times 2.350199 - (0.7 \times 0.05) - (5.5 \times 2.45) - (6.15 \times 0.05) - (8.9 \times 0.049801) + 7.6 \times 2.350199 + 3.7 \times 0.05 + 1.6 \times 0.05 + 10.05 \times 1.65 + 13.75 \times 3.7 + 16.299801 \times 21 + 7.599849 \times 3.55 + 5.759857 \times 5.05 / 2$	431.62	76.35	507.97
合计				830.94
分摊系数	计算式			系数
K7	$(706.040 \times 0.034667 + 706.040 \times 0.022424 + 706.040 \times 0.119812) / 706.040$			0.176902544
室号	计算式	套内建筑面积	分摊面积	套建筑面积
公厕102	$2.8 \times 1.2 - (2.350375 \times 0.02435) + 8.850001 \times 6.000957 + 0.400001 \times 0.024043 - (0.400002 \times 0.020225 / 2) + 0.000957 \times 0.400001 / 2$	56.42	9.98	66.40
合计				66.40
分摊系数	计算式			系数
K6	$(56.417 \times 0.034667 + 56.417 \times 0.022424 + 56.417 \times 0.119812) / 56.417$			0.176902547
室号	计算式	套内建筑面积	分摊面积	套建筑面积
屋面梯间01	$0.875 \times 1.775 + 4.925 \times 5.1$	26.67	0.93	27.60
屋面梯间02	$5.1 \times 2.425 + 5.5 \times 1.275 + 1.425 \times 7.125$	29.53	1.03	30.56
屋面梯间03	$2.675 \times 0.4 + 5.125 \times 5.1 + 1.425 \times 1.625$	29.52	1.03	30.55
屋面梯间04	$4.925 \times 5.1 + 0.875 \times 1.775$	26.67	0.93	27.60
合计				116.31
分摊系数	计算式			系数
K5	$(112.397 \times 0.034667) / 112.397$			0.034666958
室号	计算式	套内建筑面积	分摊面积	套建筑面积
2-601	$(0.575 \times 0.75) + 3 \times 1.55 + 4.675 \times 1.55 + 10.075 \times 7.975 + 0.5 \times (5.4 \times 0.6 + 6.15 \times 1.12)$	96.88	30.51	127.39
2-602	$2.5 \times 0.95 + 4.2 \times 1.725 + 3.5 \times 0.575 + 9.4 \times 7.225 + 0.5 \times (4.9 \times 0.6 + 5.65 \times 1.12)$	84.18	26.51	110.69
2-603	$9.375 \times 7.225 + 3.475 \times 0.575 + 4.175 \times 1.725 + 2.5 \times 0.95 + 0.5 \times (4.9 \times 0.6 + 1.12 \times 5.65)$	83.94	26.44	110.38
2-604	$9.725 \times 3.275 + 8.575 \times 4.975 + 9.525 \times 1.75 + 0.5 \times (1.15 \times 0.52 + 1.72 \times 5.3 + 1.12 \times 0.75) + 0.5 \times (3.37 \times 1.27)$	98.60	31.05	129.65

2-701	(0.575*0.75)+3*1.55+4.675*1.55+10.075*7.975+0.5*(5.4*0.6+6.15*1.12)	96.88	30.51	127.39
2-702	2.5*0.95+4.2*1.725+3.5*0.575+9.4*7.225+0.5*(4.9*0.6+5.65*1.12)	84.18	26.51	110.69
2-703	9.375*7.225+3.475*0.575+4.175*1.725+2.5*0.95+0.5*(4.9*0.6+1.12*5.65)	83.94	26.44	110.38
2-704	9.725*3.275+8.575*4.975+9.525*1.75+0.5*(3.37*1.27)+0.5*(1.15*0.52+1.72*5.3+1.12*0.75)	98.60	31.05	129.65
2-801	(0.575*0.75)+3*1.55+4.675*1.55+10.075*7.975+0.5*(5.4*0.6+6.15*1.12)	96.88	30.51	127.39
2-802	2.5*0.95+4.2*1.725+3.5*0.575+9.4*7.225+0.5*(4.9*0.6+5.65*1.12)	84.18	26.51	110.69
2-803	9.375*7.225+3.475*0.575+4.175*1.725+2.5*0.95+0.5*(4.9*0.6+1.12*5.65)	83.94	26.44	110.38
2-804	9.725*3.275+8.575*4.975+9.525*1.75+0.5*(3.37*1.27)+0.5*(1.15*0.52+1.72*5.3+1.12*0.75)	98.60	31.05	129.65
2-901	(0.575*0.75)+3*1.55+4.675*1.55+10.075*7.975+0.5*(5.4*0.6+6.15*1.12)	96.88	30.51	127.39
2-902	2.5*0.95+4.2*1.725+3.5*0.575+9.4*7.225+0.5*(4.9*0.6+5.65*1.12)	84.18	26.51	110.69
2-903	9.375*7.225+3.475*0.575+4.175*1.725+2.5*0.95+0.5*(4.9*0.6+1.12*5.65)	83.94	26.44	110.38
2-904	9.725*3.275+8.575*4.975+9.525*1.75+0.5*(3.37*1.27)+0.5*(1.15*0.52+1.72*5.3+1.12*0.75)	98.60	31.05	129.65
2-1001	(0.575*0.75)+2.975*1.55+4.675*1.55+10.1*7.975+0.5*(5.4*0.6+6.15*1.12)	97.04	30.56	127.60
2-1002	2.5*0.95+4.2*1.725+3.5*0.575+9.4*7.225+0.5*(4.9*0.6+5.65*1.12)	84.18	26.51	110.69
2-1003	9.375*7.225+3.475*0.575+4.175*1.725+2.5*0.95+0.5*(4.9*0.6+1.12*5.65)	83.94	26.44	110.38
2-1004	9.725*3.3+8.575*4.95+1.775*9.525+0.5*(1.15*0.52+1.72*5.3+1.12*0.75)+0.5*(3.365*1.27)	98.86	31.13	129.99
2-1101	(0.575*0.75)+2.975*1.55+4.675*1.55+10.1*7.975+0.5*(5.4*0.6+6.15*1.12)	97.04	30.56	127.60
2-1102	2.5*0.95+4.2*1.725+3.5*0.575+9.4*7.225+0.5*(4.9*0.6+5.65*1.12)	84.18	26.51	110.69
2-1103	9.375*7.225+3.475*0.575+4.175*1.725+2.5*0.95+0.5*(4.9*0.6+1.12*5.65)	83.94	26.44	110.38
2-1104	9.725*3.3+8.575*4.95+1.775*9.525+0.5*(1.15*0.52+1.72*5.3+1.12*0.75)+0.5*(3.365*1.27)	98.86	31.13	129.99
2-1201	(0.575*0.75)+2.975*1.55+4.675*1.55+10.1*7.975+0.5*(5.4*0.6+6.15*1.12)	97.04	30.56	127.60
2-1202	2.5*0.95+4.2*1.725+3.5*0.575+9.4*7.225+0.5*(4.9*0.6+5.65*1.12)	84.18	26.51	110.69
2-1203	9.375*7.225+3.475*0.575+4.175*1.725+2.5*0.95+0.5*(4.9*0.6+1.12*5.65)	83.94	26.44	110.38
2-1204	9.725*3.3+8.575*4.95+1.775*9.525+0.5*(1.15*0.52+1.72*5.3+1.12*0.75)+0.5*(3.365*1.27)	98.86	31.13	129.99
2-1301	(0.575*0.75)+2.975*1.55+4.675*1.55+10.1*7.975+0.5*(5.4*0.6+6.15*1.12)	97.04	30.56	127.60

2-1903	9.375*7.225+3.475*0.575+4.175*1.725+2.5*0.95+0.5*(4.9*0.6+1.12*5.65)	83.94	26.44	110.38
2-1904	9.725*3.3+8.575*4.95+1.775*9.525+0.5*(1.15*0.52+1.72*5.3+1.12*0.75)+0.5*(3.365*1.27)	98.86	31.13	129.99
2-2001	-(0.575*0.75)+2.975*1.55+4.675*1.55+10.1*7.975+0.5*(5.4*0.6+6.15*1.12)	97.04	30.56	127.60
2-2002	2.5*0.95+4.2*1.725+3.5*0.575+9.4*7.225+0.5*(4.9*0.6+5.65*1.12)	84.18	26.51	110.69
2-2003	9.375*7.225+3.475*0.575+4.175*1.725+2.5*0.95+0.5*(4.9*0.6+1.12*5.65)	83.94	26.44	110.38
2-2004	9.725*3.3+8.575*4.95+1.775*9.525+0.5*(1.15*0.52+1.72*5.3+1.12*0.75)+0.5*(3.365*1.27)	98.86	31.13	129.99
2-2101	-(0.575*0.75)+2.975*1.55+4.675*1.55+10.1*7.975+0.5*(5.4*0.6+6.15*1.12)	97.04	30.56	127.60
2-2102	2.5*0.95+4.2*1.725+3.5*0.575+9.4*7.225+0.5*(4.9*0.6+5.65*1.12)	84.18	26.51	110.69
2-2103	9.375*7.225+3.475*0.575+4.175*1.725+2.5*0.95+0.5*(4.9*0.6+1.12*5.65)	83.94	26.44	110.38
2-2104	9.725*3.3+8.575*4.95+1.775*9.525+0.5*(1.15*0.52+1.72*5.3+1.12*0.75)+0.5*(3.365*1.27)	98.86	31.13	129.99
2-2201	-(0.575*0.75)+2.975*1.55+4.675*1.55+10.1*7.975+0.5*(5.4*0.6+6.15*1.12)	97.04	30.56	127.60
2-2202	2.5*0.95+4.2*1.725+3.5*0.575+9.4*7.225+0.5*(4.9*0.6+5.65*1.12)	84.18	26.51	110.69
2-2203	9.375*7.225+3.475*0.575+4.175*1.725+2.5*0.95+0.5*(4.9*0.6+1.12*5.65)	83.94	26.44	110.38
2-2204	9.725*3.3+8.575*4.95+1.775*9.525+0.5*(1.15*0.52+1.72*5.3+1.12*0.75)+0.5*(3.365*1.27)	98.86	31.13	129.99
2-2301	-(0.575*0.75)+2.975*1.55+4.675*1.55+10.1*7.975+0.5*(5.4*0.6+6.15*1.12)	97.04	30.56	127.60
2-2302	2.5*0.95+4.2*1.725+3.5*0.575+9.4*7.225+0.5*(4.9*0.6+5.65*1.12)	84.18	26.51	110.69
2-2303	9.375*7.225+3.475*0.575+4.175*1.725+2.5*0.95+0.5*(4.9*0.6+1.12*5.65)	83.94	26.44	110.38
2-2304	9.725*3.3+8.575*4.95+1.775*9.525+0.5*(1.15*0.52+1.72*5.3+1.12*0.75)+0.5*(3.365*1.27)	98.86	31.13	129.99
2-2401	-(0.575*0.75)+2.975*1.55+4.675*1.55+10.1*7.975+0.5*(5.4*0.6+6.15*1.12)	97.04	30.56	127.60
2-2402	2.5*0.95+4.2*1.725+3.5*0.575+9.4*7.225+0.5*(4.9*0.6+5.65*1.12)	84.18	26.51	110.69
2-2403	9.375*7.225+3.475*0.575+4.175*1.725+2.5*0.95+0.5*(4.9*0.6+1.12*5.65)	83.94	26.44	110.38
2-2404	9.725*3.3+8.575*4.95+1.775*9.525+0.5*(1.15*0.52+1.72*5.3+1.12*0.75)+0.5*(3.365*1.27)	98.86	31.13	129.99
2-2501	-(0.575*0.75)+2.975*1.55+4.675*1.55+10.1*7.975+0.5*(5.4*0.6+6.15*1.12)	97.04	30.56	127.60
2-2502	2.5*0.95+4.2*1.725+3.5*0.575+9.4*7.225+0.5*(4.9*0.6+5.65*1.12)	84.18	26.51	110.69

2-2503	9.375*7.225+3.475*0.575+4.175*1.725+2.5*0.95+0.5*(4.9*0.6+1.12*5.65)	83.94	26.44	110.38
2-2504	9.725*3.3+8.575*4.95+1.775*9.525+0.5*(1.15*0.52+1.72*5.3+1.12*0.75)+0.5*(3.365*1.27)	98.86	31.13	129.99
2-2601	-(0.575*0.75)+2.975*1.55+4.675*1.55+10.1*7.975+0.5*(5.4*0.6+6.15*1.12)	97.04	30.56	127.60
2-2602	2.5*0.95+4.2*1.725+3.5*0.575+9.4*7.225+0.5*(4.9*0.6+5.65*1.12)	84.18	26.51	110.69
2-2603	9.375*7.225+3.475*0.575+4.175*1.725+2.5*0.95+0.5*(4.9*0.6+1.12*5.65)	83.94	26.44	110.38
2-2604	9.725*3.3+8.575*4.95+1.775*9.525+0.5*(1.15*0.52+1.72*5.3+1.12*0.75)+0.5*(3.365*1.27)	98.86	31.13	129.99
2-2701	-(0.575*0.75)+2.975*1.55+4.675*1.55+10.1*7.975+0.5*(5.4*0.6+6.15*1.12)	97.04	30.56	127.60
2-2702	2.5*0.95+4.2*1.725+3.5*0.575+9.4*7.225+0.5*(4.9*0.6+5.65*1.12)	84.18	26.51	110.69
2-2703	9.375*7.225+3.475*0.575+4.175*1.725+2.5*0.95+0.5*(4.9*0.6+1.12*5.65)	83.94	26.44	110.38
2-2704	9.725*3.3+8.575*4.95+1.775*9.525+0.5*(1.15*0.52+1.72*5.3+1.12*0.75)+0.5*(3.365*1.27)	98.86	31.13	129.99
2-2801	-(0.575*0.75)+2.975*1.55+4.675*1.55+10.1*7.975+0.5*(5.4*0.6+6.15*1.12)	97.04	30.56	127.60
2-2802	2.5*0.95+4.2*1.725+3.5*0.575+9.4*7.225+0.5*(4.9*0.6+5.65*1.12)	84.18	26.51	110.69
2-2803	9.375*7.225+3.475*0.575+4.175*1.725+2.5*0.95+0.5*(4.9*0.6+1.12*5.65)	83.94	26.44	110.38
2-2804	9.725*3.3+8.575*4.95+1.775*9.525+0.5*(1.15*0.52+1.72*5.3+1.12*0.75)+0.5*(3.365*1.27)	98.86	31.13	129.99
2-2901	-(0.575*0.75)+2.975*1.55+4.675*1.55+10.1*7.975+0.5*(5.4*0.6+6.15*1.12)	97.04	30.56	127.60
2-2902	2.5*0.95+4.2*1.725+3.5*0.575+9.4*7.225+0.5*(4.9*0.6+5.65*1.12)	84.18	26.51	110.69
2-2903	9.375*7.225+3.475*0.575+4.175*1.725+2.5*0.95+0.5*(4.9*0.6+1.12*5.65)	83.94	26.44	110.38
2-2904	9.725*3.3+8.575*4.95+1.775*9.525+0.5*(1.15*0.52+1.72*5.3+1.12*0.75)+0.5*(3.365*1.27)	98.86	31.13	129.99
2-3001	-(0.575*0.75)+2.975*1.55+4.675*1.55+10.1*7.975+0.5*(5.4*0.6+6.15*1.12)	97.04	30.56	127.60
2-3002	2.5*0.95+4.2*1.725+3.5*0.575+9.4*7.225+0.5*(4.9*0.6+5.65*1.12)	84.18	26.51	110.69
2-3003	9.375*7.225+3.475*0.575+4.175*1.725+2.5*0.95+0.5*(4.9*0.6+1.12*5.65)	83.94	26.44	110.38
2-3004	9.725*3.3+8.575*4.95+1.775*9.525+0.5*(1.15*0.52+1.72*5.3+1.12*0.75)+0.5*(3.365*1.27)	98.86	31.13	129.99
2-3101	-(0.575*0.75)+2.975*1.55+4.675*1.55+10.1*7.975+0.5*(5.4*0.6+6.15*1.12)	97.04	30.56	127.60
2-3102	2.5*0.95+4.2*1.725+3.5*0.575+9.4*7.225+0.5*(4.9*0.6+5.65*1.12)	84.18	26.51	110.69

2-3103	$9.375*7.225+3.475*0.575+4.175*1.725+2.5*0.95+0.5*(4.9*0.6+1.12*5.65)$	83.94	26.44	110.38
2-3104	$9.725*3.3+8.575*4.95+1.775*9.525+0.5*(1.15*0.52+1.72*5.3+1.12*0.75)+0.5*(3.365*1.27)$	98.86	31.13	129.99
合计				12442.96
分摊系数	计算式			系数
K4	$(9462.877*0.034667+9462.877*0.022424+9462.877*0.257845)/9462.877$			0.314935296
室号	计算式	套内建筑面积	分摊面积	套建筑面积
1-601	$3.575*1.15+3.025*0.575+2.175*1.8+3.9*1.3+10.775*8.225+0.5*(5.8*0.6+7.045*1.12)$	109.15	32.56	141.71
1-602	$2.7*0.95+4.4*1.3+9.6*8.225+0.5*(5*0.6+5.75*1.12)$	91.97	27.44	119.41
1-603	$2.7*0.95+4.375*1.3+9.575*8.225+0.5*(5*0.6+1.12*5.75)$	91.73	27.37	119.10
1-604	$3*1.55+4.7*0.975+3.95*0.575+10.1*7.975+0.5*(1.72*5.4+1.12*0.75)$	97.12	28.97	126.09
1-701	$3.575*1.15+3.025*0.575+2.175*1.8+3.9*1.3+10.775*8.225+0.5*(5.8*0.6+7.045*1.12)$	109.15	32.56	141.71
1-702	$2.7*0.95+4.4*1.3+9.6*8.225+0.5*(5*0.6+5.75*1.12)$	91.97	27.44	119.41
1-703	$2.7*0.95+4.375*1.3+9.575*8.225+0.5*(5*0.6+1.12*5.75)$	91.73	27.37	119.10
1-704	$3*1.55+4.7*0.975+3.95*0.575+10.1*7.975+0.5*(1.72*5.4+1.12*0.75)$	97.12	28.97	126.09
1-801	$3.575*1.15+3.025*0.575+2.175*1.8+3.9*1.3+10.775*8.225+0.5*(5.8*0.6+7.045*1.12)$	109.15	32.56	141.71
1-802	$2.7*0.95+4.4*1.3+9.6*8.225+0.5*(5*0.6+5.75*1.12)$	91.97	27.44	119.41
1-803	$2.7*0.95+4.375*1.3+9.575*8.225+0.5*(5*0.6+1.12*5.75)$	91.73	27.37	119.10
1-804	$3*1.55+4.7*0.975+3.95*0.575+10.1*7.975+0.5*(1.72*5.4+1.12*0.75)$	97.12	28.97	126.09
1-901	$3.575*1.15+3.025*0.575+2.175*1.8+3.9*1.3+10.775*8.225+0.5*(5.8*0.6+7.045*1.12)$	109.15	32.56	141.71
1-902	$2.7*0.95+4.4*1.3+9.6*8.225+0.5*(5*0.6+5.75*1.12)$	91.97	27.44	119.41
1-903	$2.7*0.95+4.375*1.3+9.575*8.225+0.5*(5*0.6+1.12*5.75)$	91.73	27.37	119.10
1-904	$3*1.55+4.7*0.975+3.95*0.575+10.1*7.975+0.5*(1.72*5.4+1.12*0.75)$	97.12	28.97	126.09
1-1001	$3.6*1.15+3.05*0.575+2.15*1.8+3.9*1.3+10.8*8.225+0.5*(5.8*0.6+1.12*7.045)$	109.35	32.63	141.98
1-1002	$2.7*0.95+4.4*1.3+9.6*8.225+0.5*(5*0.6+5.75*1.12)$	91.97	27.44	119.41
1-1003	$2.7*0.95+4.375*1.3+9.575*8.225+0.5*(5*0.6+1.12*5.75)$	91.73	27.37	119.10
1-1004	$2.975*1.55+4.7*0.975+3.95*0.575+10.125*7.975+0.5*(1.72*5.4+1.12*0.75)$	97.28	29.02	126.30
1-1101	$3.6*1.15+3.05*0.575+2.15*1.8+3.9*1.3+10.8*8.225+0.5*(5.8*0.6+1.12*7.045)$	109.35	32.63	141.98
1-1102	$2.7*0.95+4.4*1.3+9.6*8.225+0.5*(5*0.6+5.75*1.12)$	91.97	27.44	119.41
1-1103	$2.7*0.95+4.375*1.3+9.575*8.225+0.5*(5*0.6+1.12*5.75)$	91.73	27.37	119.10
1-1104	$2.975*1.55+4.7*0.975+3.95*0.575+10.125*7.975+0.5*(1.72*5.4+1.12*0.75)$	97.28	29.02	126.30
1-1201	$3.6*1.15+3.05*0.575+2.15*1.8+3.9*1.3+10.8*8.225+0.5*(5.8*0.6+1.12*7.045)$	109.35	32.63	141.98
1-1202	$2.7*0.95+4.4*1.3+9.6*8.225+0.5*(5*0.6+5.75*1.12)$	91.97	27.44	119.41
1-1203	$2.7*0.95+4.375*1.3+9.575*8.225+0.5*(5*0.6+1.12*5.75)$	91.73	27.37	119.10

1-1204	2.975*1.55+4.7*0.975+3.95*0.575+10.125*7.975+0.5*(1.72*5.4+1.12*0.75)	97.28	29.02	126.30
1-1301	3.6*1.15+3.05*0.575+2.15*1.8+3.9*1.3+10.8*8.225+0.5*(5.8*0.6+1.12*7.045)	109.35	32.63	141.98
1-1302	2.7*0.95+4.4*1.3+9.6*8.225+0.5*(5*0.6+5.75*1.12)	91.97	27.44	119.41
1-1303	2.7*0.95+4.375*1.3+9.575*8.225+0.5*(5*0.6+1.12*5.75)	91.73	27.37	119.10
1-1304	2.975*1.55+4.7*0.975+3.95*0.575+10.125*7.975+0.5*(1.72*5.4+1.12*0.75)	97.28	29.02	126.30
1-1401	3.6*1.15+3.05*0.575+2.15*1.8+3.9*1.3+10.8*8.225+0.5*(5.8*0.6+1.12*7.045)	109.35	32.63	141.98
1-1402	2.7*0.95+4.4*1.3+9.6*8.225+0.5*(5*0.6+5.75*1.12)	91.97	27.44	119.41
1-1403	2.7*0.95+4.375*1.3+9.575*8.225+0.5*(5*0.6+1.12*5.75)	91.73	27.37	119.10
1-1404	2.975*1.55+4.7*0.975+3.95*0.575+10.125*7.975+0.5*(1.72*5.4+1.12*0.75)	97.28	29.02	126.30
1-1501	3.6*1.15+3.05*0.575+2.15*1.8+3.9*1.3+10.8*8.225+0.5*(5.8*0.6+1.12*7.045)	109.35	32.63	141.98
1-1502	2.7*0.95+4.4*1.3+9.6*8.225+0.5*(5*0.6+5.75*1.12)	91.97	27.44	119.41
1-1503	2.7*0.95+4.375*1.3+9.575*8.225+0.5*(5*0.6+1.12*5.75)	91.73	27.37	119.10
1-1504	2.975*1.55+4.7*0.975+3.95*0.575+10.125*7.975+0.5*(1.72*5.4+1.12*0.75)	97.28	29.02	126.30
1-1601	3.6*1.15+3.05*0.575+2.15*1.8+3.9*1.3+10.8*8.225+0.5*(5.8*0.6+1.12*7.045)	109.35	32.63	141.98
1-1602	2.7*0.95+4.4*1.3+9.6*8.225+0.5*(5*0.6+5.75*1.12)	91.97	27.44	119.41
1-1603	2.7*0.95+4.375*1.3+9.575*8.225+0.5*(5*0.6+1.12*5.75)	91.73	27.37	119.10
1-1604	2.975*1.55+4.7*0.975+3.95*0.575+10.125*7.975+0.5*(1.72*5.4+1.12*0.75)	97.28	29.02	126.30
1-1701	3.6*1.15+3.05*0.575+2.15*1.8+3.9*1.3+10.8*8.225+0.5*(5.8*0.6+1.12*7.045)	109.35	32.63	141.98
1-1702	2.7*0.95+4.4*1.3+9.6*8.225+0.5*(5*0.6+5.75*1.12)	91.97	27.44	119.41
1-1703	2.7*0.95+4.375*1.3+9.575*8.225+0.5*(5*0.6+1.12*5.75)	91.73	27.37	119.10
1-1704	2.975*1.55+4.7*0.975+3.95*0.575+10.125*7.975+0.5*(1.72*5.4+1.12*0.75)	97.28	29.02	126.30
1-1801	3.6*1.15+3.05*0.575+2.15*1.8+3.9*1.3+10.8*8.225+0.5*(5.8*0.6+1.12*7.045)	109.35	32.63	141.98
1-1802	2.7*0.95+4.4*1.3+9.6*8.225+0.5*(5*0.6+5.75*1.12)	91.97	27.44	119.41
1-1803	2.7*0.95+4.375*1.3+9.575*8.225+0.5*(5*0.6+1.12*5.75)	91.73	27.37	119.10
1-1804	2.975*1.55+4.7*0.975+3.95*0.575+10.125*7.975+0.5*(1.72*5.4+1.12*0.75)	97.28	29.02	126.30
1-1901	3.6*1.15+3.05*0.575+2.15*1.8+3.9*1.3+10.8*8.225+0.5*(5.8*0.6+1.12*7.045)	109.35	32.63	141.98
1-1902	2.7*0.95+4.4*1.3+9.6*8.225+0.5*(5*0.6+5.75*1.12)	91.97	27.44	119.41
1-1903	2.7*0.95+4.375*1.3+9.575*8.225+0.5*(5*0.6+1.12*5.75)	91.73	27.37	119.10
1-1904	2.975*1.55+4.7*0.975+3.95*0.575+10.125*7.975+0.5*(1.72*5.4+1.12*0.75)	97.28	29.02	126.30
1-2001	3.6*1.15+3.05*0.575+2.15*1.8+3.9*1.3+10.8*8.225+0.5*(5.8*0.6+1.12*7.045)	109.35	32.63	141.98
1-2002	2.7*0.95+4.4*1.3+9.6*8.225+0.5*(5*0.6+5.75*1.12)	91.97	27.44	119.41
1-2003	2.7*0.95+4.375*1.3+9.575*8.225+0.5*(5*0.6+1.12*5.75)	91.73	27.37	119.10

1-2004	2.975*1.55+4.7*0.975+3.95*0.575+10.125*7.975+0.5*(1.72*5.4+1.12*0.75)	97.28	29.02	126.30
1-2101	3.6*1.15+3.05*0.575+2.15*1.8+3.9*1.3+10.8*8.225+0.5*(5.8*0.6+1.12*7.045)	109.35	32.63	141.98
1-2102	2.7*0.95+4.4*1.3+9.6*8.225+0.5*(5*0.6+5.75*1.12)	91.97	27.44	119.41
1-2103	2.7*0.95+4.375*1.3+9.575*8.225+0.5*(5*0.6+1.12*5.75)	91.73	27.37	119.10
1-2104	2.975*1.55+4.7*0.975+3.95*0.575+10.125*7.975+0.5*(1.72*5.4+1.12*0.75)	97.28	29.02	126.30
1-2201	3.6*1.15+3.05*0.575+2.15*1.8+3.9*1.3+10.8*8.225+0.5*(5.8*0.6+1.12*7.045)	109.35	32.63	141.98
1-2202	2.7*0.95+4.4*1.3+9.6*8.225+0.5*(5*0.6+5.75*1.12)	91.97	27.44	119.41
1-2203	2.7*0.95+4.375*1.3+9.575*8.225+0.5*(5*0.6+1.12*5.75)	91.73	27.37	119.10
1-2204	2.975*1.55+4.7*0.975+3.95*0.575+10.125*7.975+0.5*(1.72*5.4+1.12*0.75)	97.28	29.02	126.30
1-2301	3.6*1.15+3.05*0.575+2.15*1.8+3.9*1.3+10.8*8.225+0.5*(5.8*0.6+1.12*7.045)	109.35	32.63	141.98
1-2302	2.7*0.95+4.4*1.3+9.6*8.225+0.5*(5*0.6+5.75*1.12)	91.97	27.44	119.41
1-2303	2.7*0.95+4.375*1.3+9.575*8.225+0.5*(5*0.6+1.12*5.75)	91.73	27.37	119.10
1-2304	2.975*1.55+4.7*0.975+3.95*0.575+10.125*7.975+0.5*(1.72*5.4+1.12*0.75)	97.28	29.02	126.30
1-2401	3.6*1.15+3.05*0.575+2.15*1.8+3.9*1.3+10.8*8.225+0.5*(5.8*0.6+1.12*7.045)	109.35	32.63	141.98
1-2402	2.7*0.95+4.4*1.3+9.6*8.225+0.5*(5*0.6+5.75*1.12)	91.97	27.44	119.41
1-2403	2.7*0.95+4.375*1.3+9.575*8.225+0.5*(5*0.6+1.12*5.75)	91.73	27.37	119.10
1-2404	2.975*1.55+4.7*0.975+3.95*0.575+10.125*7.975+0.5*(1.72*5.4+1.12*0.75)	97.28	29.02	126.30
1-2501	3.6*1.15+3.05*0.575+2.15*1.8+3.9*1.3+10.8*8.225+0.5*(5.8*0.6+1.12*7.045)	109.35	32.63	141.98
1-2502	2.7*0.95+4.4*1.3+9.6*8.225+0.5*(5*0.6+5.75*1.12)	91.97	27.44	119.41
1-2503	2.7*0.95+4.375*1.3+9.575*8.225+0.5*(5*0.6+1.12*5.75)	91.73	27.37	119.10
1-2504	2.975*1.55+4.7*0.975+3.95*0.575+10.125*7.975+0.5*(1.72*5.4+1.12*0.75)	97.28	29.02	126.30
1-2601	3.6*1.15+3.05*0.575+2.15*1.8+3.9*1.3+10.8*8.225+0.5*(5.8*0.6+1.12*7.045)	109.35	32.63	141.98
1-2602	2.7*0.95+4.4*1.3+9.6*8.225+0.5*(5*0.6+5.75*1.12)	91.97	27.44	119.41
1-2603	2.7*0.95+4.375*1.3+9.575*8.225+0.5*(5*0.6+1.12*5.75)	91.73	27.37	119.10
1-2604	2.975*1.55+4.7*0.975+3.95*0.575+10.125*7.975+0.5*(1.72*5.4+1.12*0.75)	97.28	29.02	126.30
1-2701	3.6*1.15+3.05*0.575+2.15*1.8+3.9*1.3+10.8*8.225+0.5*(5.8*0.6+1.12*7.045)	109.35	32.63	141.98
1-2702	2.7*0.95+4.4*1.3+9.6*8.225+0.5*(5*0.6+5.75*1.12)	91.97	27.44	119.41
1-2703	2.7*0.95+4.375*1.3+9.575*8.225+0.5*(5*0.6+1.12*5.75)	91.73	27.37	119.10
1-2704	2.975*1.55+4.7*0.975+3.95*0.575+10.125*7.975+0.5*(1.72*5.4+1.12*0.75)	97.28	29.02	126.30
1-2801	3.6*1.15+3.05*0.575+2.15*1.8+3.9*1.3+10.8*8.225+0.5*(5.8*0.6+1.12*7.045)	109.35	32.63	141.98
1-2802	2.7*0.95+4.4*1.3+9.6*8.225+0.5*(5*0.6+5.75*1.12)	91.97	27.44	119.41
1-2803	2.7*0.95+4.375*1.3+9.575*8.225+0.5*(5*0.6+1.12*5.75)	91.73	27.37	119.10
1-2804	2.975*1.55+4.7*0.975+3.95*0.575+10.125*7.975+0.5*(1.72*5.4+1.12*0.75)	97.28	29.02	126.30

1-2901	$3.6*1.15+3.05*0.575+2.15*1.8+3.9*1.3+10.8*8.225+0.5*(5.8*0.6+1.12*7.045)$	109.35	32.63	141.98
1-2902	$2.7*0.95+4.4*1.3+9.6*8.225+0.5*(5*0.6+5.75*1.12)$	91.97	27.44	119.41
1-2903	$2.7*0.95+4.375*1.3+9.575*8.225+0.5*(5*0.6+1.12*5.75)$	91.73	27.37	119.10
1-2904	$2.975*1.55+4.7*0.975+3.95*0.575+10.125*7.975+0.5*(1.72*5.4+1.12*0.75)$	97.28	29.02	126.30
1-3001	$3.6*1.15+3.05*0.575+2.15*1.8+3.9*1.3+10.8*8.225+0.5*(5.8*0.6+1.12*7.045)$	109.35	32.63	141.98
1-3002	$2.7*0.95+4.4*1.3+9.6*8.225+0.5*(5*0.6+5.75*1.12)$	91.97	27.44	119.41
1-3003	$2.7*0.95+4.375*1.3+9.575*8.225+0.5*(5*0.6+1.12*5.75)$	91.73	27.37	119.10
1-3004	$2.975*1.55+4.7*0.975+3.95*0.575+10.125*7.975+0.5*(1.72*5.4+1.12*0.75)$	97.28	29.02	126.30
1-3101	$3.6*1.15+3.05*0.575+2.15*1.8+3.9*1.3+10.8*8.225+0.5*(5.8*0.6+1.12*7.045)$	109.35	32.63	141.98
1-3102	$2.7*0.95+4.4*1.3+9.6*8.225+0.5*(5*0.6+5.75*1.12)$	91.97	27.44	119.41
1-3103	$2.7*0.95+4.375*1.3+9.575*8.225+0.5*(5*0.6+1.12*5.75)$	91.73	27.37	119.10
1-3104	$2.975*1.55+4.7*0.975+3.95*0.575+10.125*7.975+0.5*(1.72*5.4+1.12*0.75)$	97.28	29.02	126.30
合计				13174.62
分摊系数	计算式			系数
K3	$(10146.779*0.034667+10146.779*0.022424+10146.779*0.241286)/10146.779$			0.298376938
室号	计算式	套内建筑面积	分摊面积	套建筑面积
地下室风井103	$0.8*4.649881+(0.8+0.052605)*0.000119/2$	3.72	0.13	3.85
地下室风井104	$6.2*0.9$	5.58	0.19	5.77
地下室风井105	$0.9*6.2$	5.58	0.19	5.77
地下室风井106	$5.9*0.8$	4.72	0.16	4.88
合计				20.27
分摊系数	计算式			系数
K2	$(19.600*0.034667)/19.600$			0.034666939
室号	计算式	套内建筑面积	分摊面积	套建筑面积

安置商业101	$3.000001 * 3.000001 * (1.570796 - \sin(1.570796)) / 2 + 3 * 3 * (1.57084 - \sin(1.57084)) / 2 - (0.8 * 4.649881) - ((0.8 + 0.052605) * 0.000119 / 2) + (78.45 + 84.45) * 3.000005 / 2 + 84.45 * 0.199737 + 83.65 * 5.9 + 80.45 * 2.350263 + 7.580399 * 0.039555 + 1.75 * 0.7 + 16.299737 * 6 + 14.699747 * 0.05 - (0.05 * 3.7) - (1.7 * 2.35) - (1.75 * 2.55) - (1.8 * 0.099747) - (2.400253 * 3.2) - (2.350248 * 1.2) - (2.400246 * 0.8) - (2.350245 * 2.75) + 1.05 * 1.8 + 1.5 * 0.1 + 13.75 * 1.7 + 15.65 * 1 + 16.29976 * 0.1 + 14.49976 * 6.2 + 16.29977 * 2.8 - (0.3 * 4.2) - (1.9 * 1.35) - (0.3 * 1.199774) - (2.15 * 0.05) - (2.600226 * 0.75) - (2.550225 * 1.2) - (2.600223 * 3.2) - (2.550218 * 0.9) + 0.4 * 0.05 + 0.55 * 0.100216 + 2.35 * 0.05 + 1.85 * 1.75 + 7.799784 * 2.25 + 2.25 * 0.05 + 14.499787 * 6.1 + 11.774797 * 0.55 + 14.499798 * 6.1 + 10.649807 * 0.05 - (0.05 * 0.6) + 7.799807 * 3.95 - (1.75 * 0.95) - (1.7 * 2.35) - (1.75 * 2.649814) - (2.4 * 0.4) - (2.45 * 0.15) - (2.550186 * 0.35) - (2.600186 * 3.2) - (2.550181 * 1.2) - (2.600179 * 0.8) + 0.05 * 0.450178 + 1.199822 * 1.6 + 10.05 * 0.2 + 13.75 * 1.6 + 16.299824 * 1 + 15.099826 * 3.2 + 1.5 * 0.2 + 3.699999 * 1.6 + 1.05 * 1.8 + 5.599999 * 1 - (0.8 * 0.05) - (3.2 * 0.05) - (8.9 * 2.4) - (7.95 * 0.05) - (7.9 * 4.9) - (6.225 * 1.249999) - (1.35 * 0.05) + 3.6 * 8.15 + 10.725 * 1.900001 + 21.133163 * 6.836488 / 2 + 22.416121 * 13.708061 / 2 - (20.358388 * 8.846797 / 2) + 0.549999 * 20.350957 / 2 - 1 * (2.45 * 0.55)$	1611.28	285.04	1896.32
合计				1896.32
分摊系数	计算式			系数
K1	$(1611.280 * 0.034667 + 1611.280 * 0.022424 + 1611.280 * 0.119812) / 1611.280$			0.176902543



宛城区汉冶街道净土庵社区闫庄城中村改造项目 26#B 房屋共用部位设计说明表

房屋坐落：宛城区张衡大道中段551号		
为多幢楼服务的共用面积		
公共设施名称	所在楼层及位置	服务对象
公厕	1	整个小区
物业用房	5	整个小区
社区服务设施	5	整个小区
社区文体活动中心	5	整个小区
党建用房	5	整个小区
屋面梯间	出屋面层	地上及地下部分
仅为本幢楼服务的公共面积		
公共设施名称	所在楼层及位置	服务对象
外半墙	1层至出屋面层	地上各功能区
门厅、电梯间、楼梯间、电井、水暖井、梯间风井	1层至5层	安置商业、配套用房、住宅
安置商业门廊、安置商业楼梯间、安置商业电井、安置商业排烟井、安置商业风井	1层至5层	安置商业、配套用房
安置商业风机房	6层	安置商业、配套用房
二层卫生间	2层	2层安置商业
三层卫生间	3层	3层安置商业
四层卫生间	4层	4安置层商业
楼梯间、电梯间、电井、水暖井、前室、梯间风井、室外连廊	6层至31层	1单元住宅
楼梯间、电梯间、电井、水暖井、前室、梯间风井、室外连廊	6层至31层	2单元住宅
<p>外墙设计厚度说明：</p> <p>1、一层至五层外墙厚度为200mm，部分外墙厚度为250mm、300mm；六层至十四层外墙厚度为250mm，部分外墙厚度为200mm；十五层至三十一层外墙厚度为200mm，部分外墙厚度为250mm；外墙保温厚度为30mm。</p> <p>2、阳台为未封闭阳台。</p>		

设计单位名称（盖章）



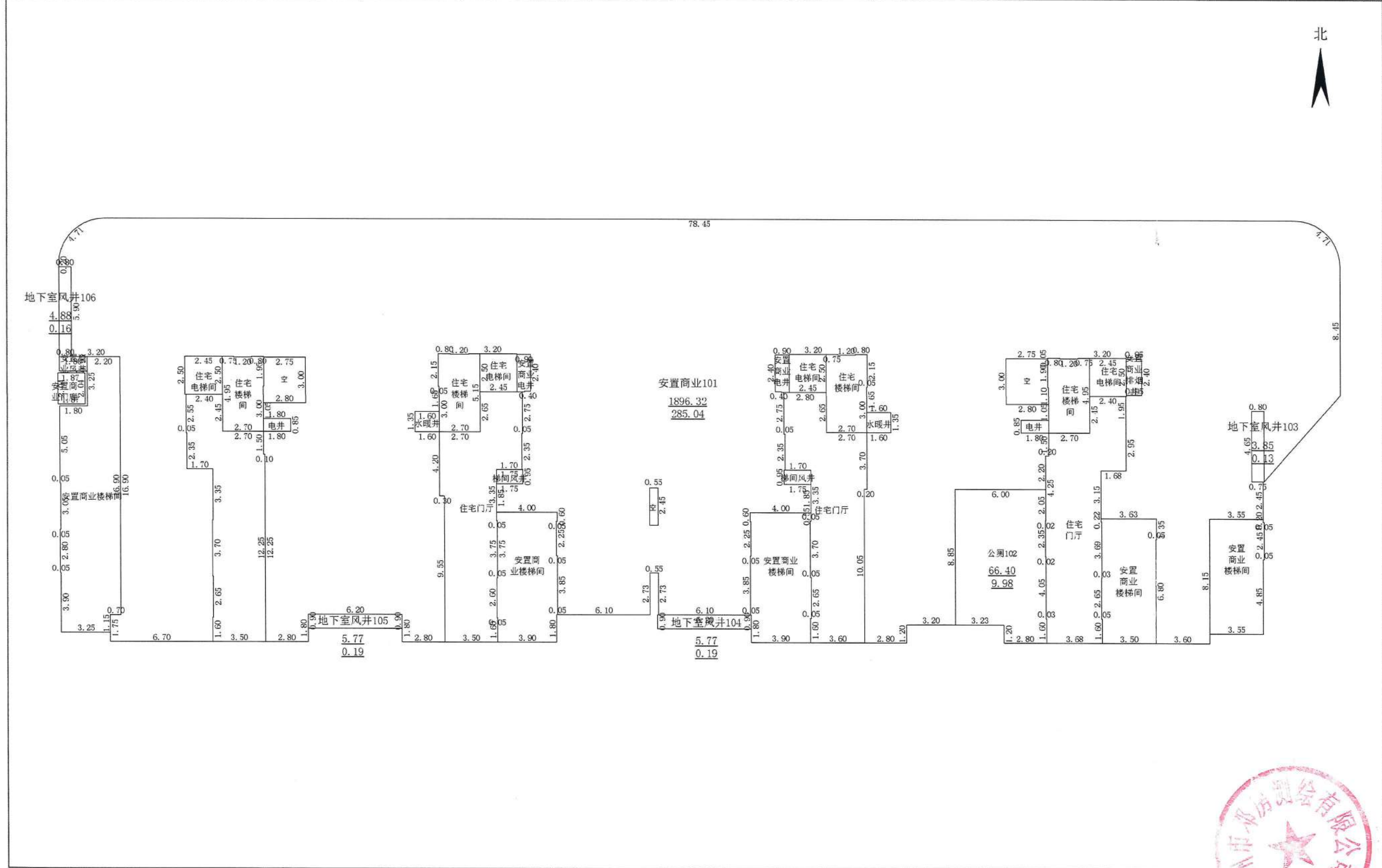
建设单位名称（盖章）



经办人签字：

房产分层图

房产坐落	宛城区张衡大道中段551号				建筑结构	剪力墙	层套内面积(m ²)	1687.30	
测绘幢号	26#B楼				建成年份	2025	层共有面积(m ²)	295.69	
总层数	33	地上层数	31	地下层数	2	所在层数	1	层建筑面积(m ²)	1982.99



北



2025年12月23日
测绘人:王明君

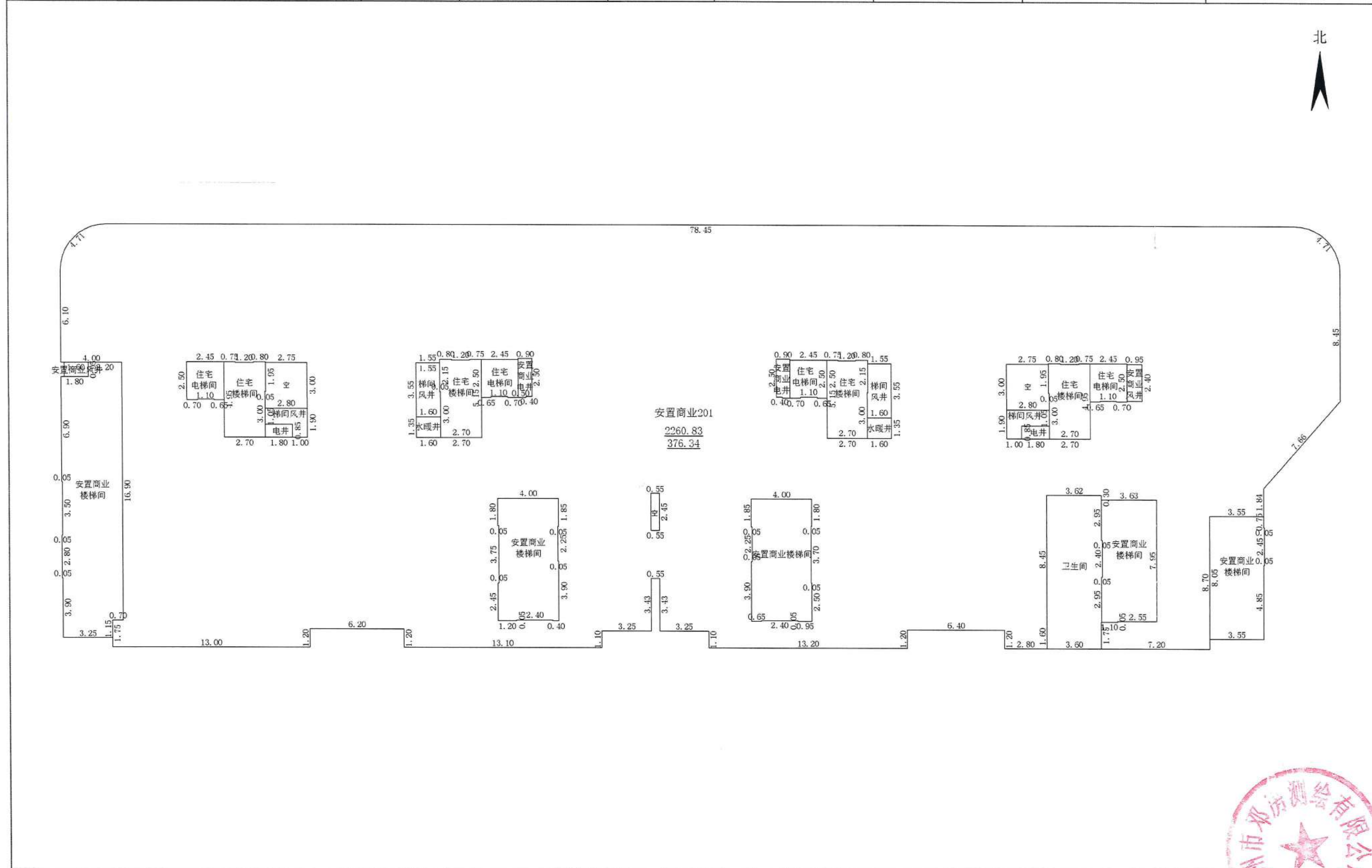
校核人:胡健

比例 1:250



房产分层图

房产坐落	宛城区张衡大道中段551号				建筑结构	剪力墙	层套内面积(m ²)	1884.49
测绘幢号	26#B楼				建成年份	2025	层共有面积(m ²)	376.34
总层数	33	地上层数	31	地下层数	2	所在层数	层建筑面积(m ²)	2260.83



2025年12月23日
测绘人: 王明君

校核人: 胡健

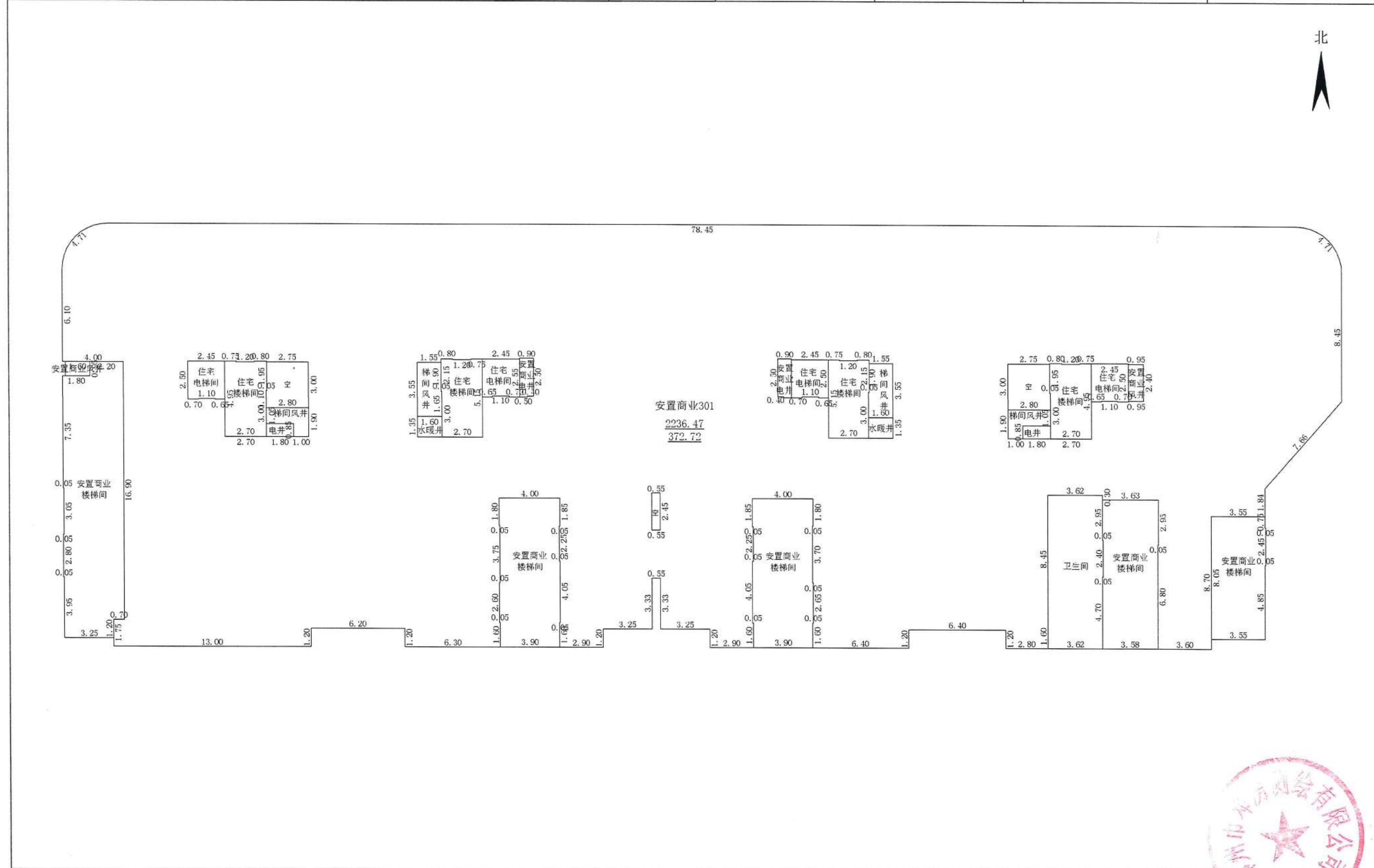
比例 1:250

邓州市邓房测绘有限公司



房产分层图

房产坐落	宛城区张衡大道中段551号				建筑结构	剪力墙	层套内面积(m ²)	1863.75	
测绘幢号	26#B楼				建成年份	2025	层共有面积(m ²)	372.72	
总层数	33	地上层数	31	地下层数	2	所在层数	3	层建筑面积(m ²)	2236.47



2025年12月23日
测绘人:王明君

校核人:胡健

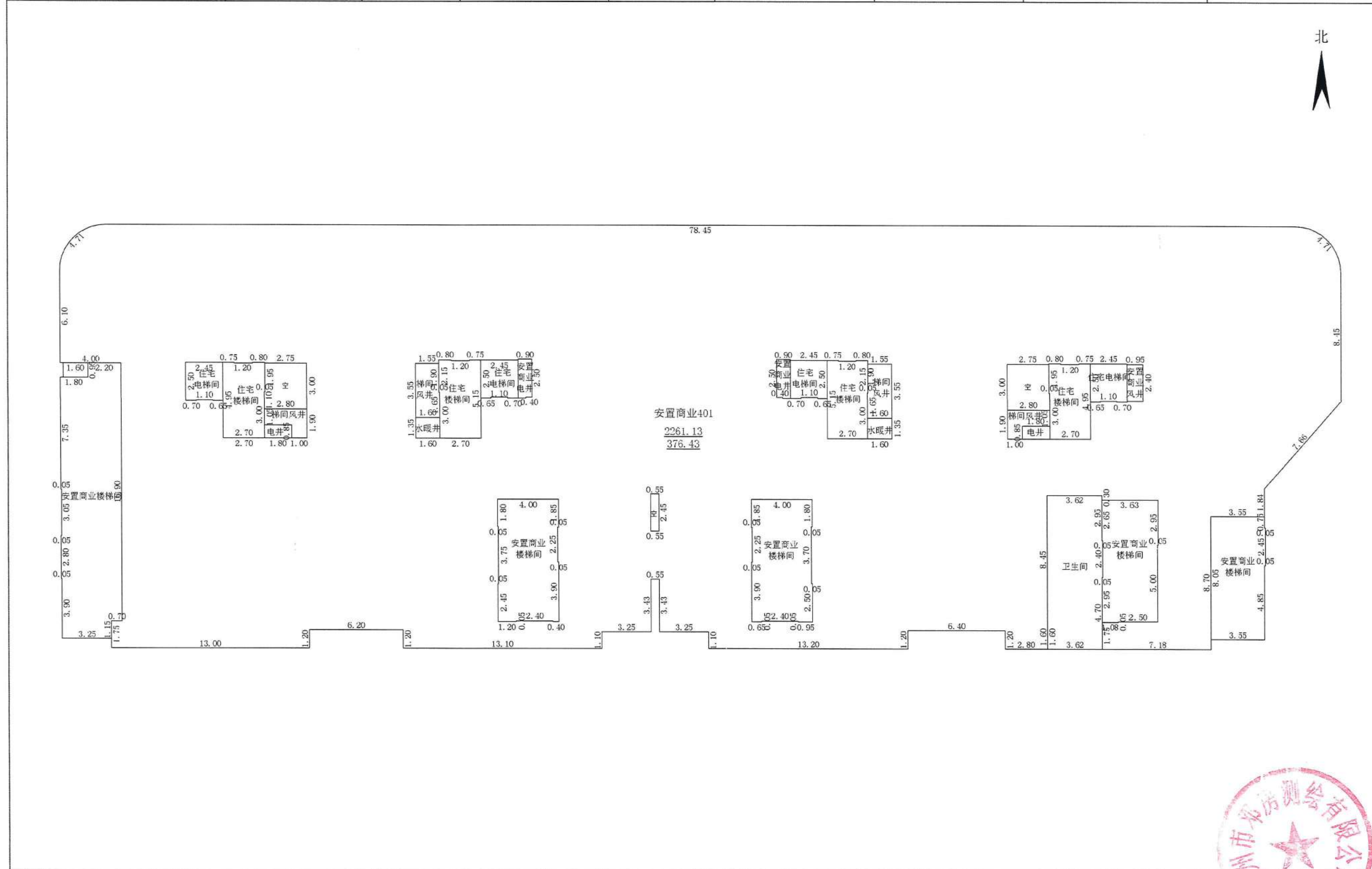
比例 1:250

邓州市邓房测绘有限公司



房产分层图

房产坐落	宛城区张衡大道中段551号				建筑结构	剪力墙	层套内面积(m ²)	1884.70
测绘幢号	26#B楼				建成年份	2025	层共有面积(m ²)	376.43
总层数	33	地上层数	31	地下层数	2	所在层数	层建筑面积(m ²)	2261.13



2025年12月03日
测绘人: 王明君

校核人: 胡 健

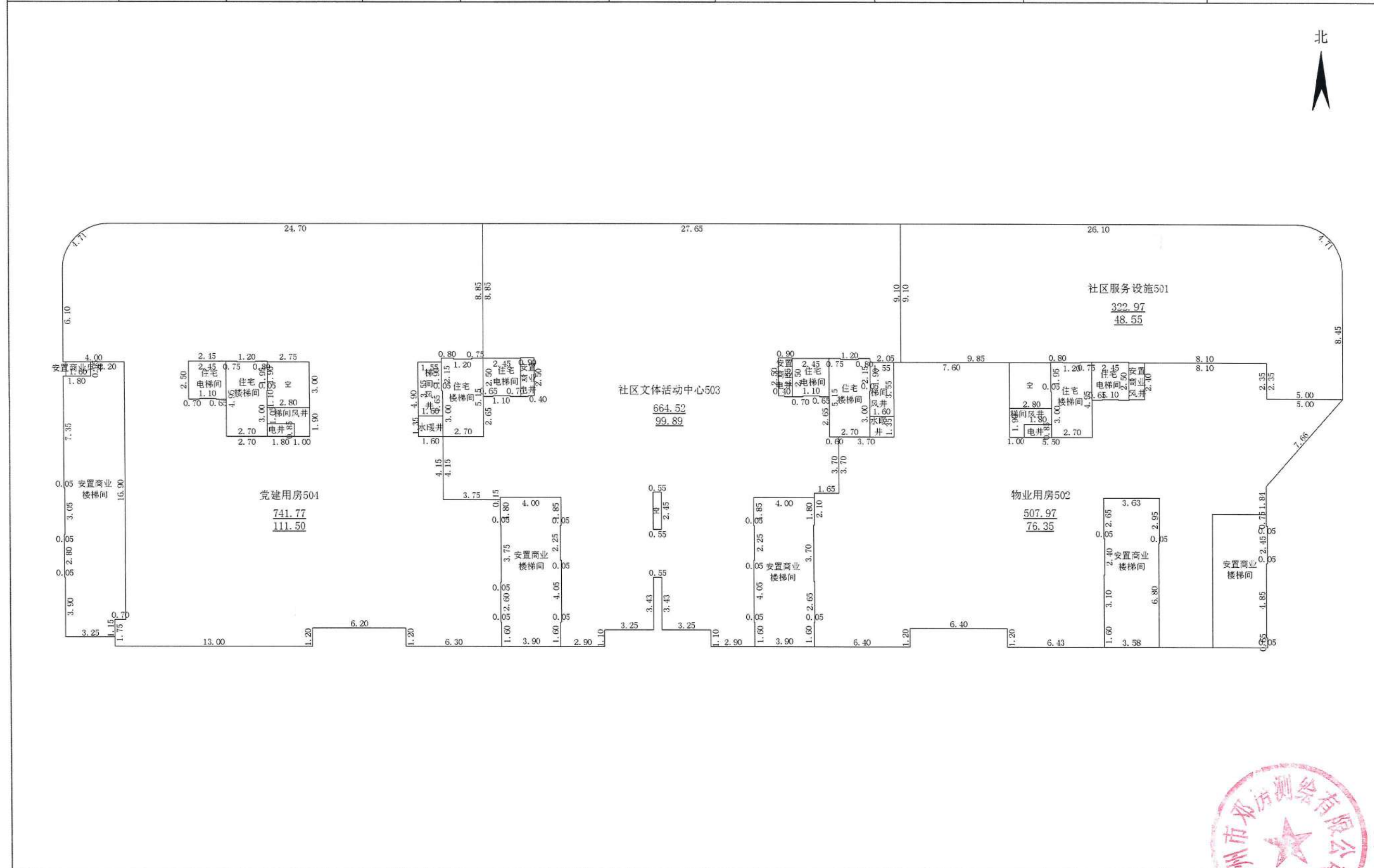
比例 1:250

邓州市邓房测绘有限公司



房产分层图

房产坐落	宛城区张衡大道中段551号				建筑结构	剪力墙	层套内面积(m ²)	1900.95
测绘幢号	26#B楼				建成年份	2025	层共有面积(m ²)	336.28
总层数	33	地上层数	31	地下层数	2	所在层数	层建筑面积(m ²)	2237.23



2025年12月23日
测绘人: 王明君

校核人: 胡健

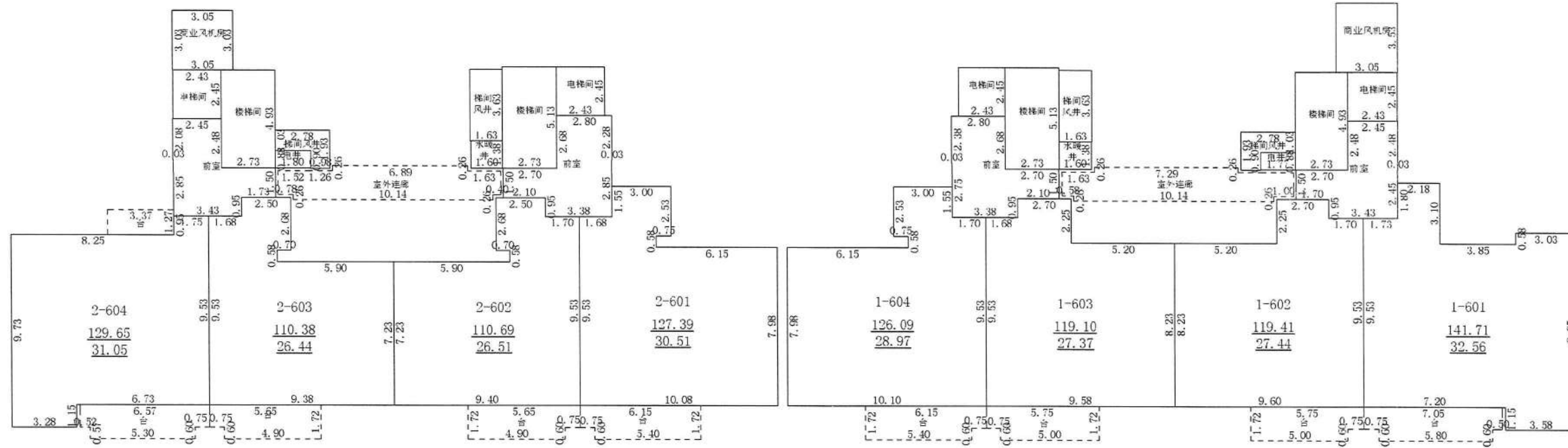
比例 1:250

邓州市邓房测绘有限公司



房产分层图

房产坐落	宛城区张衡大道中段551号				建筑结构	剪力墙	层套内面积(m ²)	753.57	
测绘幢号	26#B楼				建成年份	2025	层共有面积(m ²)	230.85	
总层数	33	地上层数	31	地下层数	2	所在层数	6	层建筑面积(m ²)	984.42



2025年12月03日
测绘人: 王明君

校核人: 胡 健

比例 1:250

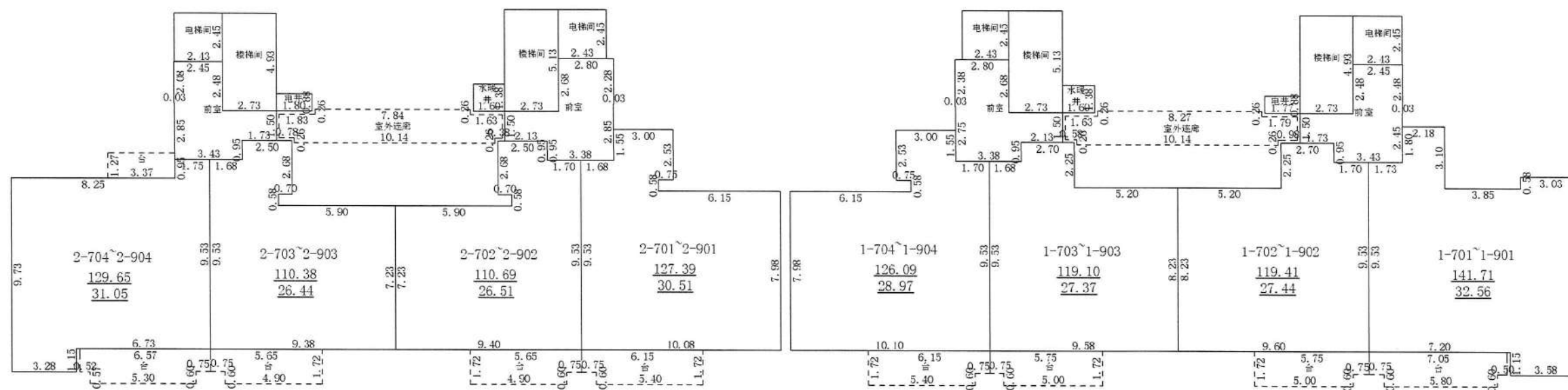


邓州市邓房测绘有限公司

房产分层图

房产坐落	宛城区张衡大道中段551号				建筑结构	剪力墙	层套内面积(m ²)	753.57	
测绘幢号	26#B楼				建成年份	2025	层共有面积(m ²)	230.85	
总层数	33	地上层数	31	地下层数	2	所在层数	7-9	层建筑面积(m ²)	984.42

北



2025年12月23日
测绘人:王明君

校核人:胡健

比例 1:250

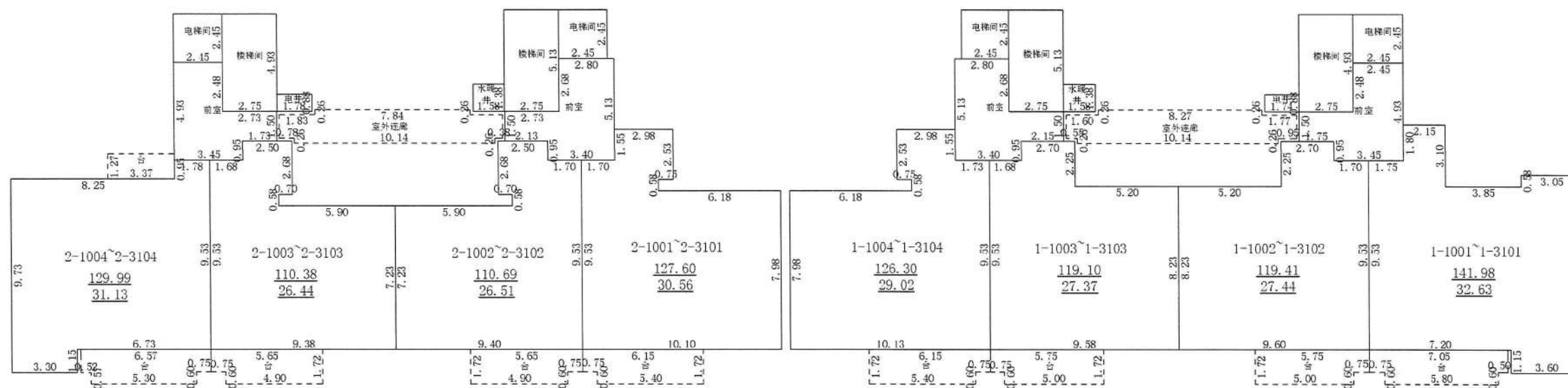
邓州市邓房测绘有限公司



房产分层图

房产坐落	宛城区张衡大道中段551号				建筑结构	剪力墙	层套内面积(m ²)	754.35	
测绘幢号	26#B楼				建成年份	2025	层共有面积(m ²)	231.10	
总层数	33	地上层数	31	地下层数	2	所在层数	10-31	层建筑面积(m ²)	985.45

北



2025年12月03日
测绘人:王明君

校核人:胡健

比例 1:250

邓州市邓房测绘有限公司



房产分层图

房产坐落	宛城区张衡大道中段551号				建筑结构	剪力墙	层套内面积(m ²)	112.39	
测绘幢号	26#B楼				建成年份	2025	层共有面积(m ²)	3.92	
总层数	33	地上层数	31	地下层数	2	所在层数	出屋面层	层建筑面积(m ²)	116.31

北

